



# Shaft cutout sizes

Lift unit installed within a shaft by others

Recommended positioning of fixing points.  
Loads per fixing point, F=250 N

Door front cutout sizes		
Landing	Width	Height
A 0	1030	2250
B 1	830	2250
C 2	1030	2250

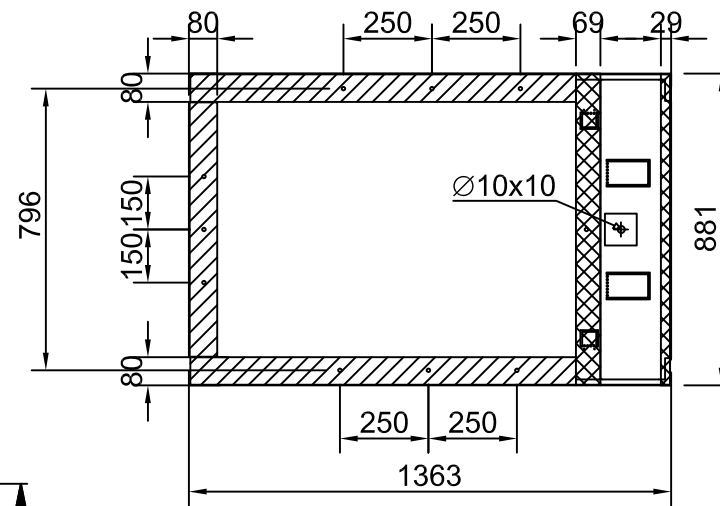
Loads sustained by shaft and platform and fixing points bottom frame



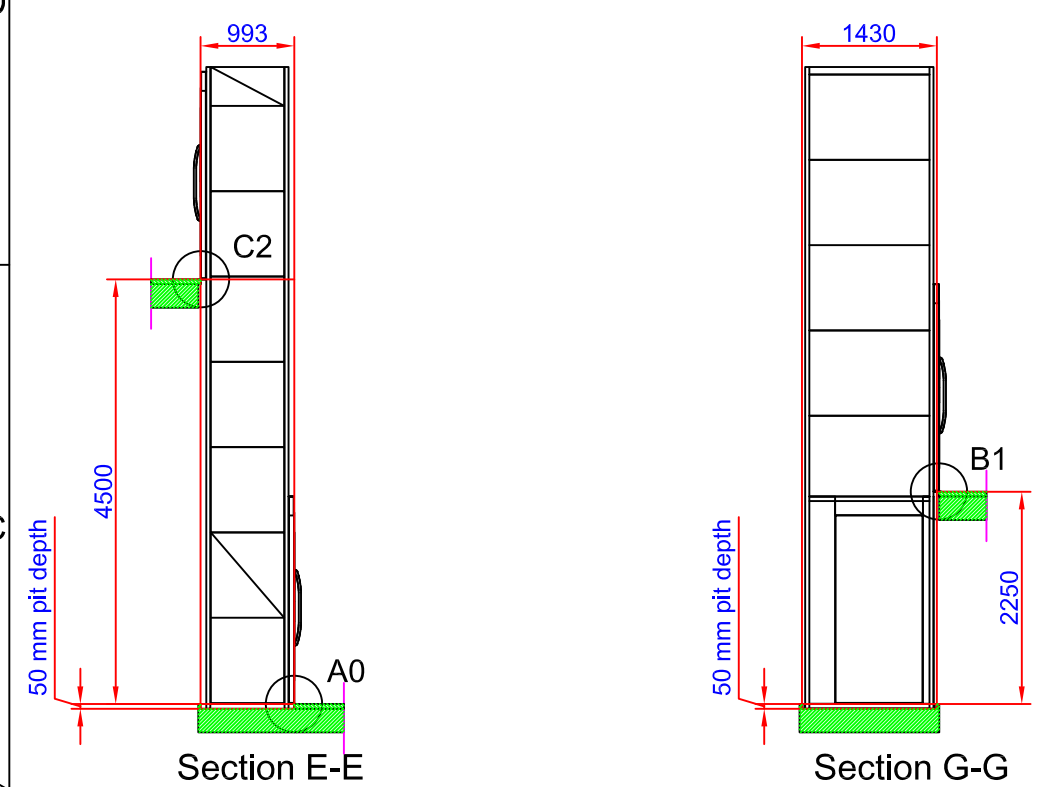
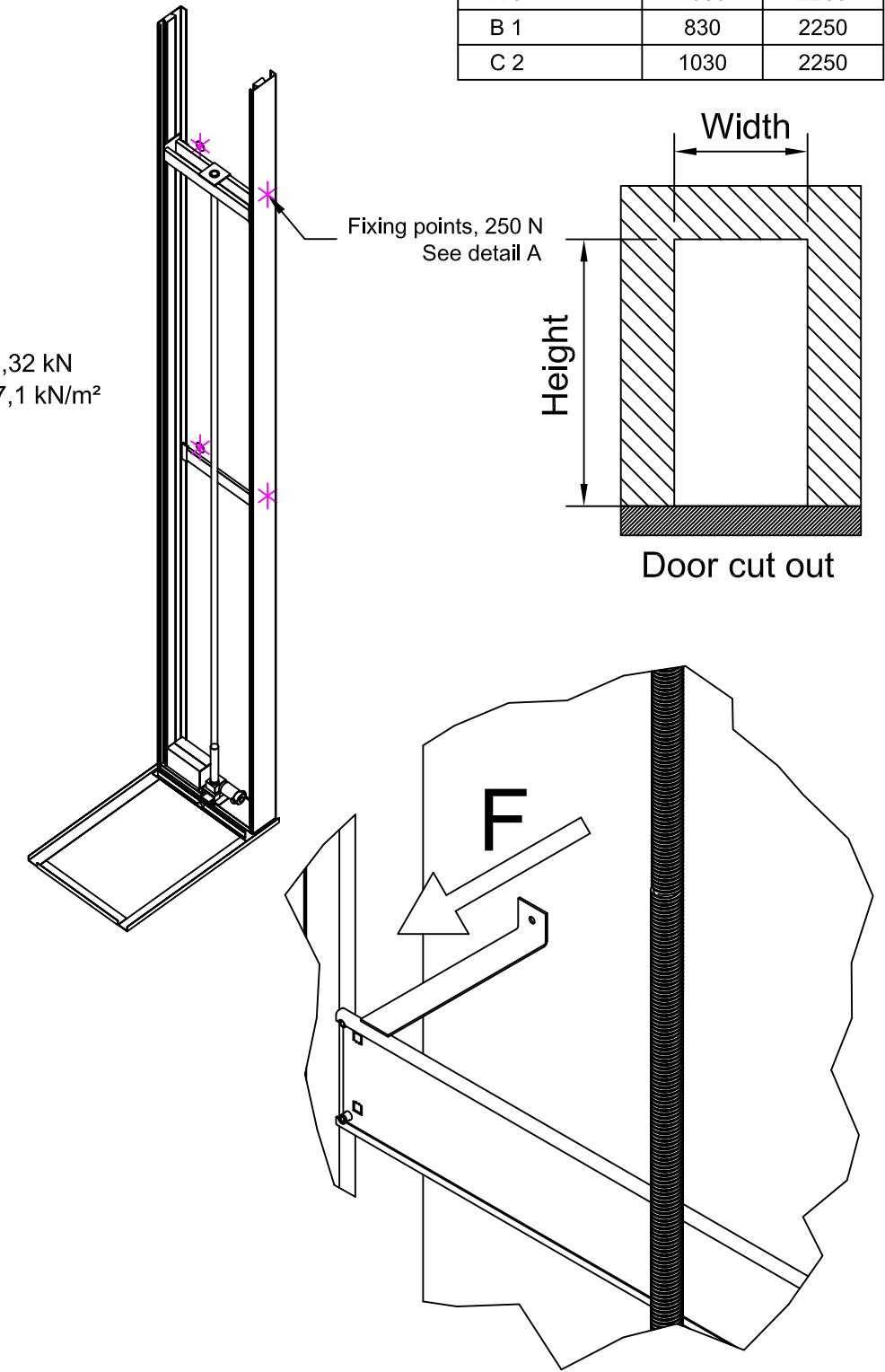
L section force: 7,5 kN  
L section load: 24,59 kN/m<sup>2</sup>



Mast force: 8,32 kN  
Mast load: 67,1 kN/m<sup>2</sup>



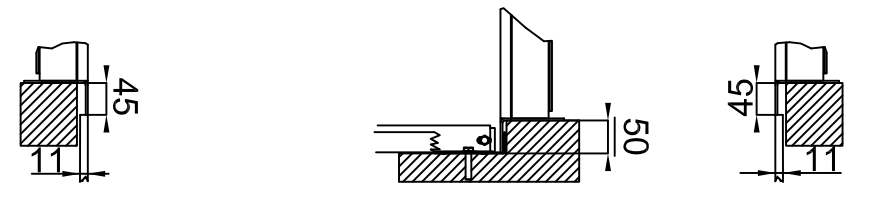
Scale: 1:20



50 mm pit depth + 10 mm, - 0 mm.  
Bottom surface must be flat



C2 (1:10)      A0 (1:10)      B1 (1:10)



Approved by builder:  _____			Tender no		Principal drawing	
			Order no		A4000 - 1000*830	
European view placement:	Gen. Tolerances SS-ISO 27681-1 m		Date 2018-10-25	sheet 2 of 7	Scale: A3, 1:60	