
User guide

Cibăș

PLATFORM & CABIN LIFTS

Thank you for choosing Cibes Lift!

Every lift is unique. Find out the serial number of your lift and use it to contact your Cibes Lift technician.

MY CIBES LIFT

Lift owners name:

Cibes authorized dealer's Company name:

Cibes authorized dealer's telephone number:

Lift number:

Date of manufacture:

CIDIs number:

Lift model:

Software version:

Warranty:

Cibes authorized dealer's signature:

Distributors:



CONTENT

Introduction	4
Definitions and symbols	5
Safety Instructions	6
Operating	8
Safety equipment	10
Troubleshooting	12
Extending the life of your lift	13
How to clean your lift	14
How to clean your Cibes lift	15

Introduction

This document is a supplement to the operation and maintenance manual.

Regular maintenance is essential to ensure your safety and a smooth lift operation. To ensure proper lift operation, the owner must carefully read and understand the content in this manual before use. The lift owner shall keep these instructions for future use.

PREFACE

The lift is manufactured and designed to be assembled as described in the Cibes Assembly Instructions. Any additions to or modifications of the lift that are not authorised by Cibes and performed by Cibes or our certified partners, can affect the function and safety of the lift. If a part of the lift needs replacing it must be sourced and provided by Cibes. The manufacturer is not liable for functional faults or safety defects arising from unauthorised parts, additions, or modifications. The lift is designed to be used as described in this User Guide. The manufacturer is not liable for functional faults or safety defects due to reckless use or vandalism.

Cibes Lift AB manufacturers lifts approved and certified by EU notified bodies.

Cibes Lift AB products undergo thorough inspections and quality control before leaving the factory.

Cibes Lift AB

Mail: info@cibesliftgroup.com

Phone: +46 26 17 14 00

DISCLAIMER

Installation, service, and maintenance must be performed by qualified personnel only. Failure to follow these instructions may compromise the lift's safety system and potentially result in severe injury or death. Cibes Lift Group AB is not responsible for property damage, warranty claims, or personal injury, including death due to non-compliance.

After installation, the lift must be inspected and serviced at least once a year. The number of inspections varies depending on usage, environment, and local regulations. As an owner, you must ensure that the lift is regularly serviced.

Part of the Cibes service recommendations is included in this manual. The service manual provided with the lift must be updated at the time of the service and kept by the owner. This service manual is provided in addition to the operation and maintenance manual instructions.

Make sure your Cibes Lift installer shares a copy of the parts warranty and any documentation relating to the use of the lift and its warranty.

These instructions are general. We reserve the right to update and modify the content of this document. The Cibes brand belongs to © Cibes Lift Group AB.

Definitions and symbols

The list below includes a number of terms and definitions included in the body of this manual.

PEOPLE

Owner: The person who owns the lift.

Lift user: A person who uses the lift.

Competent personnel: A person with training, knowledge, and practical experience in the maintenance of Cibes' lifts in a safe manner.

LIFT MODELS

Cibes A4000

Cibes A5000

Cibes Air

Cibes Cloud Plus

Cibes C1 Pure

FUNCTIONALITIES

Door automation: An option allowing landing doors to open automatically upon the lift's arrival.

Call button: The button is located on the side of the door frame, allowing the lift to be called to the desired landing.

Control panel: The control panel inside the lift with control buttons for the lift.

Control buttons: The buttons on the control panel command the lift to go to the chosen landing. They have priority on the call button. The control buttons are "hold to run", meaning they must be pressed during the entire lift ride.

Emergency stop: It is a push button on the control panel that makes the lift come to a complete stop. When activated, it cuts the lift's power supply, which will stop the lift immediately. To get the lift to start again, the emergency stop must be released.

Safety edges: Mechanical pressure profiles are located along three of the four sides of the lift floor to ensure passenger safety, making getting clothing and other things stuck between the lift floor and the lift shaft impossible. When applying pressure, the lift stops as a security measure.

Safety bar: A mechanical pressure profile is located above the control panel to ensure passenger safety, making getting clothing and other things stuck between the lift back and the lift shaft impossible. When applying pressure, the lift stops as a security measure.

SYMBOLS



Danger



Safety measure



Caution

Safety instructions

GENERAL INSTRUCTIONS

The lift is designed for people's transport only. Cibes accepts no liability if the lift is used for other purposes than people's transport.



Only competent personnel are authorized to repair and maintain the lift. As a user, you are not allowed to perform any work on the lift unless you are competent personnel with the training and practical experience appropriate to carry out the lift's installation, servicing, and maintenance safely.

PROHIBITED ACTIONS

- Do not spray water on the lift.
- Do not lean against the lift shaft walls.
- Do not jump in the lift while it is running.
- Do not let children use the lift without supervision.
- Do not force or attempt to open the doors while the lift moves.
- Do not use the lift in case of fire, earthquake, or if it behaves abnormally.
- Labels with warning text and safety instructions must not be repositioned or made illegible.
- Do not remove parts of the lift or subject it to force or damage.
- Do not use the lift to transport oversized or heavy goods.
- Never attempt to evacuate passengers from the lift yourself if it has stopped between two landings.

MANDATORY ACTIONS

- Use the lift only as described in this manual.
- Be observant of the safety edges: clothes caught, involuntary pressure, etc.
- Familiarise yourself with the use of the communication system present in the lift.
- Know how to locate the power supply to the lift and disconnect it in an emergency.
- Advise wheelchair users to lock the wheelchair wheels in the lift.
- If an animal is to be transported in the lift, ensure it does not interfere with any of the safety edges.

OUTDOOR LIFTS

A warranty void may occur if a lift designed for indoor use is installed outdoors.

RESET

Resetting the control system is necessary under the following circumstances:

- The lift is turned off or has been without power for a long time (>60 min).
- The lift is not working as expected due to a system failure.

FLOODING AND RAIN



In the event of foreseeable flooding, raise the lift to an upper level to avoid damaging the machinery behind the control panel. If water enters the lift, turn off the power supply and contact your maintenance personnel.




How it works

OPERATION DURING NORMAL CONDITIONS


1. Call the lift

- a. Press the call button on the door frame to call the lift. *The lift can be equipped with an optional remote or elbow call button.*
- b. Once the platform reaches the landing, open the door and enter the lift. *The door will open automatically if the lift has an optional door automation.*

 It is impossible to open the lift door while the platform travels.

2. Use the lift

- a. Once you enter the lift and the door closes, the lift is ready to use.
- b. **For platform lifts:** Press and hold the control button for the desired landing. The platform will remain in motion when the control button is pressed. When reaching the landing, the lift will stop.
For cabin lifts: Press the button for desired floor and the lift will automatically start and travel to the desired landing.
- c. Once the lift reaches the desired landing, the lift door can be opened.

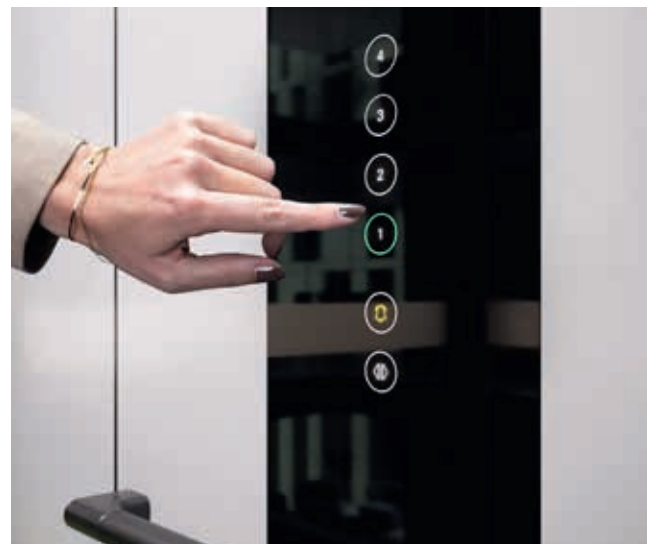
 Operation of the lift using the control buttons takes priority over operation through the call buttons.



Standard call button




Cibes A5000 control panel.



Cibes C1 Pure control panel.

USING AUTOMATIC DOORS

As an option, your lift can be fitted with automatic doors.

 **Never force the door to open; otherwise, you will damage it, and parts must be replaced.**

1. Call the lift

- a. Press the call button.
- b. Once the lift reaches the landing, the door opens, and you can enter the lift.

2. Use the lift

- a. To close the door:
 - i. Wait, the door closes automatically at the end of the time delay.
 - ii. Press the control button for the wanted landing. The door closes instantly.
- b. To open the door on the same landing or restart the timer:
 - i. Press the control button for your landing. The door opens/the timer is reset.
- c. Once the lift reaches the desired landing, the door opens automatically. *Platform lifts have swing doors and cabin lifts have sliding doors.*



Automatic door opener **Cibes Cloud Plus** with a swing door.



Automatic door opener **Cibes C1 Pure** with sliding doors.


OPERATION IN THE EVENT OF A POWER FAILURE

The lift has an electric emergency lowering: In the case of a power outage, a passenger can operate the lift to the nearest lower landing using any control button. Once the lift has reached the most immediate lower landing, the door opens, and the passenger can exit. The lift then goes out of service until the power is restored.

Note that the emergency lowering has the following characteristics:

- During emergency lowering, the travel speed is considerably lower.
- All control buttons move the lift downward.
- The lift's safety system is always active during an emergency lowering.
- The emergency lighting and telephone system will remain operational for up to one hour after the power outage.
- The doors can be reopened from inside or outside the lift with any button.
- The lift will travel to the next lower landing and will not be operational until power is restored. It will be operating approximately 10 seconds after power is restored.
- If the lift has been without power for an extended period of time, its battery must be charged for a day before it is operational.

If the lift must be operated from outside, emergency lowering, and manual door opening can only be done by competent personnel.

 **Never try to exit the lift if it is stuck between landings. In this case, use the emergency phone and contact someone trained in rescue procedures.**

Safety equipment

SAFETY EQUIPMENT

1. Emergency stop

The control panel has an emergency stop button that must be pressed to activate. When activated, an LED indicator on the button lights up red, and the lift stops.

To deactivate the emergency stop, turn the emergency stop button as shown on the button. The LED indicator will turn off, and the lift will be active again.

- a. Below you see the emergency buttons of the Cibes A4000/ A5000 and Cibes Cloud Plus, to the right those of Cibes Air. The emergency stop is red, and the alarm button is yellow.
- b. On the Cibes Air, the emergency stop button is activated by pressing downwards. Press down the exposed metal tip and raise the emergency button to deactivate it. *Cabin lifts do not have emergency buttons.*

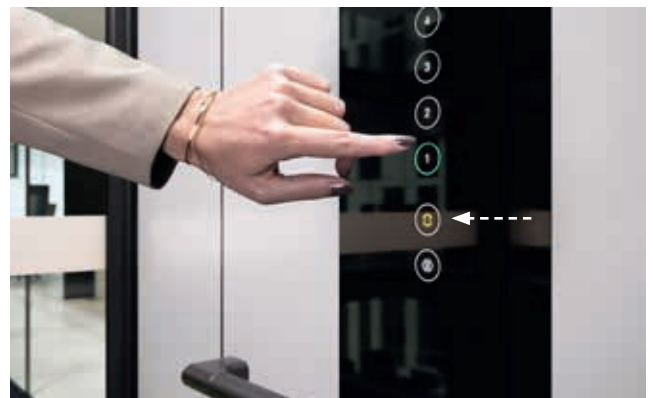


a. The emergency buttons on the Cibes A5000, the stop button is red and the alarm button is yellow.

2. Alarm button

The lift control panel features an alarm button for manual malfunction alerts. Pressing this button triggers an audible alarm signal. If the lift is equipped with an integrated communication system, pressing the alarm button for 10 seconds activates the emergency call.

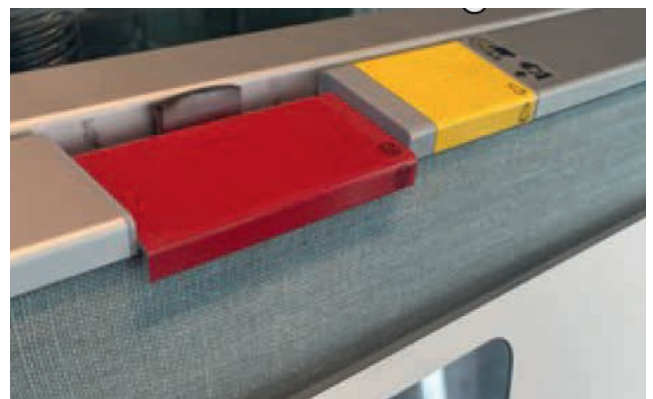
If the lift does not have an integrated communication system, the lift is equipped with an external telephone handset, and the emergency call will not be activated via the alarm button. Use the handset to call the desired number.



The alarm button on the Cibes C1 Pure is yellow.



a. The emergency buttons on the Cibes Cloud Plus, the stop button is red and the alarm button is yellow.



b. The emergency buttons on the Cibes Air, is red and the alarm button is yellow. The emergency stop button is activated by pressing downwards. To deactivate it, press down on the exposed metal tip and raise the emergency button.

3. Telephony

The lift is equipped with a telephone system for emergency communication.

- a. With an external telephone handset, dial the number you choose from the keypad.
- b. With an integrated telephone system, hold the yellow alarm button for 10 seconds to trigger the call to the pre-programmed number(s). Multiple numbers can be registered. If the first number called does not pick up, the system will automatically dial the second number, and so on.



The communication system for Cibes A5000.



The communication system for Cibes Air.

A yellow light flashes to indicate that the telephone system is online. When a call is triggered, a green light starts flashing. When the call is connected, the green light is steady.

- c. Below, you see the communications systems for Cibes A5000 and Cibes Air.

4. Safety edges and safety bar

Platform lifts has safety edges along three sides of the floor and a safety bar above the control panel. Cabin lifts do not have safety edges or safety bars.

The lift will stop if:

- a. The safety bar or one of the safety edges is pushed down.
- b. Something is stuck between the lift shaft and the safety edges/bar.



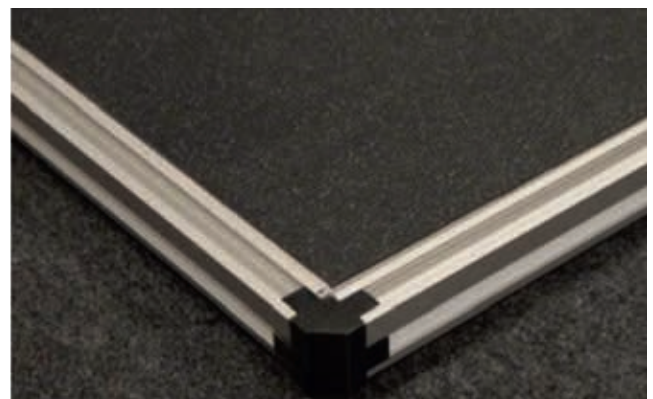
To resume the lift operation the safety bar/edges must not be pressed, and the lift user must keep the control button pressed.



The safety bar on Cibes Air.




The communication system for Cibes Cloud Plus behind panel.



Standard safety edges.

Troubleshooting

 Never try to exit the lift if it is stuck between landings. In this case, please use the emergency phone to call for help.

If the lift does not start, perform these basic checks:

- **Are all landing doors correctly closed and locked?**
The lift cannot move if a door is open.
- **Has the lift been without power for more than two hours?**
Depending on the duration of the power cut and the condition of your batteries, a recharge may be necessary. Contact your maintenance personnel if in doubt or after a ten-hour power cut. If the batteries need recharging, the call button will flash.
- **Are any of the safety edges or the safety bar activated?**
Remove all pressure from safety equipment.
- **Is the emergency button activated?**
A5000: turn the button to release it.
Cibes Air: Press down the exposed metal tip and raise the emergency stop button.
- **Are the lights on the lift flashing?**
The lift is resetting and will resume in two minutes.
- **Is there an audible alarm, and are the control panel buttons flashing?**
The lift is overloaded.
- **Is a message displayed on the level indicator at the landing?**
Communicate this message to your technician for diagnosis.

If nothing of this works:

- **Contact your Cibes Lift maintenance personnel**
They will be able to put the lift back into working order.

CIBES APPLICATION CiMon



We recommend that you download the “CLG CiMon” application from the App Store (iPhone) or Google Play (Android). This app will help you provide helpful lift information to a Cibes Lift technician in case of a lift malfunction.

Once you have opened the app, there will be a list of available Bluetooth devices. In that list, choose your lift. The app will ask you to enter the lift’s CiDis number, given to you at installation. When that is done, a code you must give the lift technician will appear on your screen. This code will allow the technician to connect to your lift remote. It also lets you download and send the lift log file to the lift technician. *This app will only work for lifts manufactured from January 2023.*



Extending the life of your lift

Installing a lift is an investment in your comfort. It must be used and maintained correctly to extend its lifespan.

THREE WAYS TO EXTEND THE LIFE OF YOUR LIFT

1. Follow the instructions in this user manual

Keep this manual to ensure the proper functioning of your lift.

2. Schedule regular maintenance

Following the maintenance schedule will help ensure that your lift is in good working order.

3. Carry out regular checks

Inspect the parts of the lift, such as buttons and handles, to prevent possible malfunctions between maintenance visits. If the lift starts to make strange noises, contact your maintenance personnel.

How to contact Cibes Lift

You can contact us for advice. As a manufacturer, we are committed to meeting your requests. Please send an email with your lift number to: info@cibesliftgroup.com



Cleaning your lift

Given the variety of materials used in the manufacture of lifts, take care to use the right product in the right place to ensure the longevity of the parts of your lift.

To keep your lift clean throughout its life, follow the below steps:

CLEANING YOUR LIFT

1. Interior cleaning

- a. Use an alcohol-based solution on painted surfaces like the control panel. Be careful not to spray directly on any buttons.
- b. On unpainted surfaces, such as buttons, it is recommended to use an alcohol-free solution so as not to damage the plastics over time.
- c. Use a vacuum cleaner for the floor.



Keep all liquids away from electronic components. If contact occurs, unplug the lift immediately and wipe the piece as dry as possible, then contact your competent personnel.

2. Ceiling cleaning

Use a vacuum cleaner with a soft nozzle to remove any dust. If there are stains, remove them with a cloth. Ensure not to come into contact with lighting surfaces.

3. Cleaning the bottom of the pit

The competent personnel must clean the bottom of the pit; it is included in maintenance visits. Do not enter the pit to clean.

4. Exterior cleaning

Use a cloth, warm water, and soap to clean the doors, shaft, and glazing. For steel surfaces, be sure to use a non-corrosive cleaning product.



If you have an outdoor lift, keeping a clean area in front of it, free of gravel and leaves, is essential.



Cleaning your Cibes Air

LINEN FINISH

Dust is drawn to linen. Regular cleaning is vital for fabric-covered surfaces. We recommend using a textile spray. This makes it more difficult for dirt to set and will be easier to remove. Vacuum the fabric with a suitable nozzle once a week.

If the fabric has been stained, follow the steps below:

- **Act as soon as possible**

Start by trying to remove the stains with a damp cloth. A detergent foam for cleaning fabrics and furniture can be used for more prominent stains. Always read the product information on how it should be used first. Do not use stain removers not intended for cleaning fabrics and furniture, as they can bleach your fabric.

- **Always use white cloths**

Try to avoid rubbing the stain. Apply detergent, let it set, then press the stain several times with a clean cloth, paper towel, or sponge. This draws out the stain. If you must scrub, use circular movements toward the center of the stain.

If the fabric is to be disinfected, it must be thoroughly cleaned first. Please note that disinfection of fabric may cause some colour bleaching. Use neutral ethanol if necessary.

Avoid disinfectants containing bleach.

WOOL FINISH

Wool doesn't attract dirt as quickly as other fabrics. Vacuum or brush the fabric once a week. Regular cleaning helps detect stains before they stick. This will make their removal easier.

If the fabric has been stained, follow the steps below:

- **Gently scrape off** the stain and vacuum/brush the fabric. Do not use a too sharp tool to scrape, as this may damage the fabric if the stain has dried.
- **Use ordinary detergent** with Neutral pH, diluted in lukewarm water if the stain is not removed. Always read the product information on how it should be used. Avoid heavily dampening the wool, which may leave stains and shrink the fabric.
- **Wipe as much as possible** with a dry cloth, towel, or sponge.
- **Press the fabric with a dry cloth**, paper towel or sponge each time water is added to remove moisture and dirt.
- **Use clean water** without detergent for final cleaning. The area may appear darker than the surrounding tissue after cleaning with water. This will become less noticeable over time.

Wool can be disinfected with ethanol, but this will damage the wool's natural fat (lanolin), cause colour changes, and shorten the life of the fabric. Therefore, this method should only be used if no other alternative exists.



Linen



Wool

BRINGING PEOPLE TOGETHER

Founded in 1947, Cibes Lift is a world-leading manufacturer of space-saving, ready-made lifts. High-quality Swedish engineering and great Scandinavian design are the secrets behind our success. All lifts are manufactured in our factory in Sweden and exported to more than 70 countries via a network of 200 certified dealers. Cibes Lift is a part of Cibes Lift Group.

Cibes

www.cibeslift.com info@cibeslift.com