

---

# More space for the life you love

Ciběs

PRODUCT GUIDE FOR SHAFTLESS HOME LIFT CIBES ASCENDA

---





## More space for the life you love

We understand that every square metre of your home is precious. That is why our latest home lift has a stylish and flexible design that makes the most of your living space.

Cibes Ascenda only takes up room at one floor at a time and offers you a unique blend of ergonomic elegance and high-quality materials that will stand the test of time.

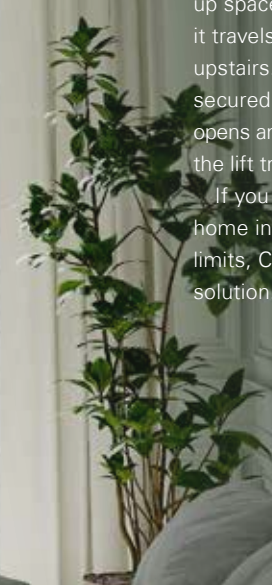
Discover a lift that is designed to optimise every square metre of your home, leaving you plenty of space for the life you love.

## Living space without limits

Thanks to its smart, shaftless design, Cibes Ascenda optimises your living space, both upstairs and downstairs. This is how it works:

When the lift travels up, it frees up space downstairs, and when it travels down, it frees up space upstairs. The floor opening is secured by a safety hatch that opens and closes automatically as the lift travels between floors.

If you want to transform your home into a living space without limits, Cibes Ascenda is a great solution.



### Smart safety hatch

When the lift car descends to the bottom landing, an automated hatch covers the floor opening to make the space on the top landing space fully usable and safe.

### Battery emergency lowering system

In case of a power outage, this automated feature allows you to lower and exit the lift without outside assistance. The lift is also equipped with a manual hand crank and emergency lowering motor operated from the outside for additional safety.

### Responsive safety plate

Should the lift car encounter an obstacle on its way down, the safety plate automatically brings the lift to an instant halt.

### Quiet and energy-efficient drive

Encased in an elegant mast made of high-quality safety glass, our screw-driven system is designed to be whisper-quiet and energy-efficient.



## Home lift with premium standard

It is the combination of screw-driven, through-the-floor technology and premium design that makes Cibes Ascenda unique.



### Elegant saloon doors

Cibes Ascenda includes panoramic saloon doors with concealed, automatic door openers as standard – a very stylish and space-saving feature.



### Folding seat

The folding seat\* is a great example of flexible comfort. Just fold the seat down when you need it and simply fold it up again when you have no more use for it.

### Mirror ceiling with built-in fan

The mirror ceiling looks sleek and modern and makes the lift car feel even more spacious. It also features a built-in fan to offer you a fresh breeze as you travel.



### Ergonomic handrail controls

The elegant and ergonomic handrail controls\* are comfortable to use both standing and seated. They are also very easy to operate for wheelchair users.

\*The folding seat and handrail controls are standard on all sizes except size S.

# Stylish & future proof living

Buying a residential lift is a smart way to future proof your home, but it is also an investment that needs to add durable value to your home. That is why we have made sure that Cibes Ascenda is designed to be the perfect choice for stylish and future proof living.

---

## Robust, screw-driven system

Unlike other shaftless home lifts, Cibes Ascenda has a robust and reliable screw-driven system that requires very little maintenance.

## High-quality safety glass

The lift car, doors and mast are delivered in high-quality safety glass for a light and airy look that is resistant to wear and tear over time.

## Stylish and durable lighting

The LED lighting fixtures fitted to the lift car and guiderails are not only durable. They also make your lift look spectacular, especially at nighttime.

---



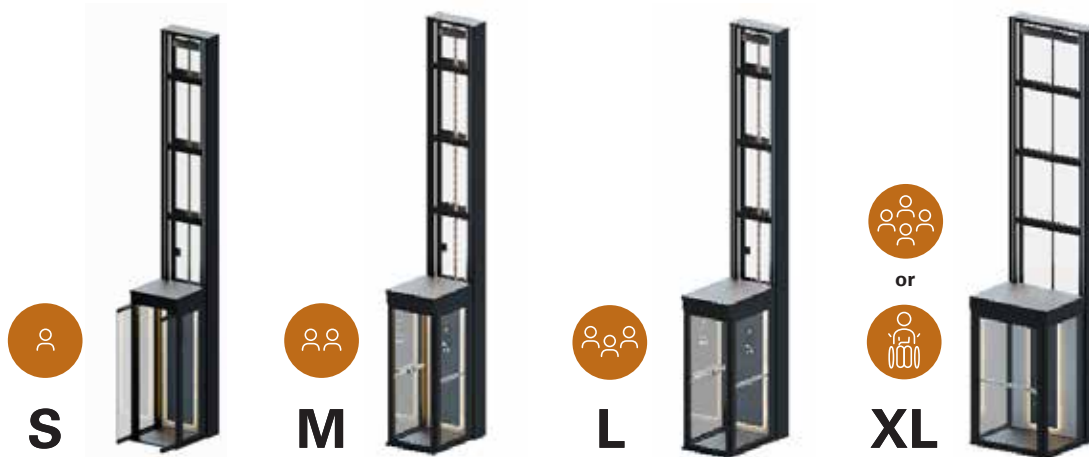
## Black or white elegance

Cibes Ascenda is available in Signal White RAL 9003 or in Graphite Black RAL 9011. Two classic shades that look great in any home.

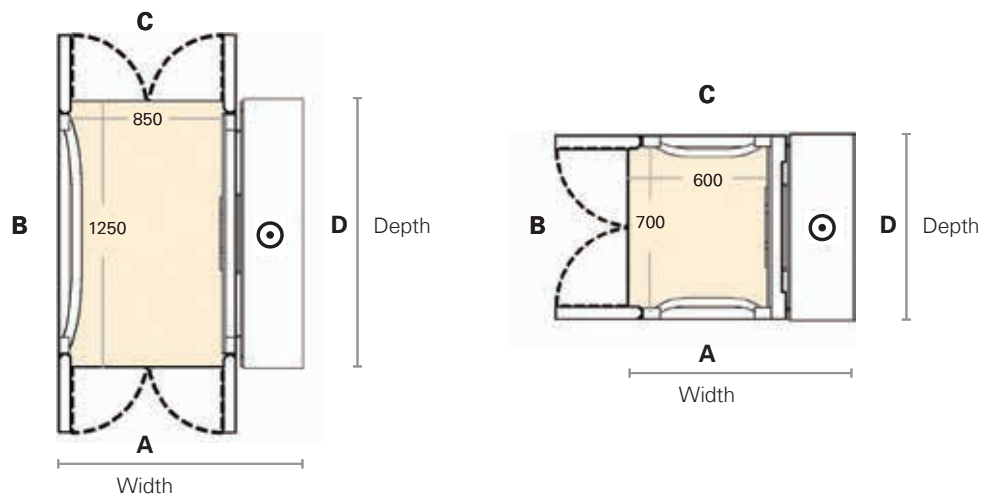


# Finding the right size for you

Cibes Ascenda comes in four sizes, from S to XL, to cater for different needs. If you are looking for a home lift for everyday comfort, our smaller sizes offer you a great solution. But if you need the lift to accommodate a wheelchair, our largest size is probably the best option.

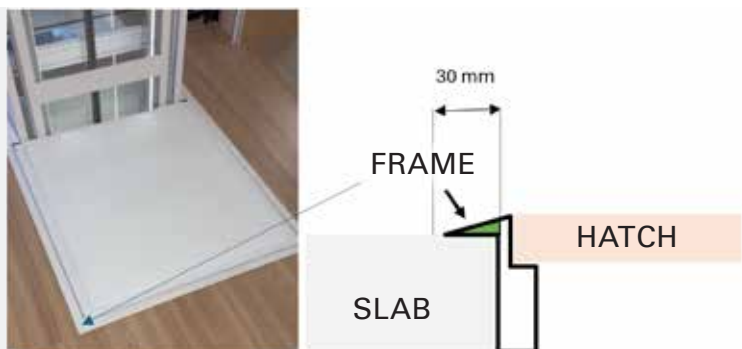


Lift size	Lift car interior (width x depth)	Footprint lift car + mast (width x depth)	Hatch cut-out (width x depth)	Door clear opening (width x depth)
S	600 x 700 mm	1056 x 818 mm	1132 x 930 mm	700 x 2000 mm
M	800 x 700 mm	1256 x 818 mm	1332 x 930 mm	700 x 2000 mm
L	1000 x 700 mm	1456 x 818 mm	1532 x 930 mm	700 x 2000 mm
XL	850 x 1250 mm	1302 x 1382 mm	1375 x 1496 mm	824 x 2000 mm



The width is always side A/C and the depth is always side B/D. The machinery is always on side D.

The frame of the floor hatch needs 30 mm on all sides that are not placed directly against a wall.



# Technical details

Technical specifications	
Installation	Indoor
Travel	Max 4270 mm
Max number of stops	2
Rated load	350 kg
Power supply	1 x 230 VAC +/- 10%, 20 A, 50/60 Hz, min. 3 x 2,5 mm <sup>2</sup> *. *The same power supply with 16 A is possible with 0.10 m/s speed and a rated load of 250 kg for sizes S, M and L or 265 kg for size XL with single entry. <b>Please note:</b> The technical information about the fuses and the cross-sectional area of cables is for guidance only and must always be evaluated and checked by a professional electrician.
Speed	0.13 m/s
Min. headroom on top floor	2300 mm
Pit depth	0 mm
Machine room	Machine room less (MRL)
Electrical cabinet	Externally fitted on the mast on the ground floor or remote (<3m)
Drive system	Screw and nut
Lift controls	Hold-to-run operation both to call the lift and to travel. All lift sizes come with a vertical control panel and two wireless remote controls for the landings. Lift sizes M, L and XL also include handrail controls.
Control system	Icon microcomputer-based, CE compliant control system
Motor power	2.9 kW
Door configuration	Single entry (S, M, L, XL), open-through (XL)
Door models	Automatic saloon door
Glass quality	Tempered and laminated safety glass (4.0 mm + 0.76 mm PVB foil + 4.0 mm)
Safety	Top and bottom obstruction sensors, top floor safety hatch equipped with safety edges, overload protection, emergency stop and alarm button, telephone and battery emergency lowering operated from the inside + emergency lowering motor and manual hand crank operated from the outside.
Directives & Standards	Machinery Directive 2006/42/EC and applicable parts of EN 81-41:2024

**Note:** Hold-to-run operation is mandatory in Europe. In other countries, different rules may apply.



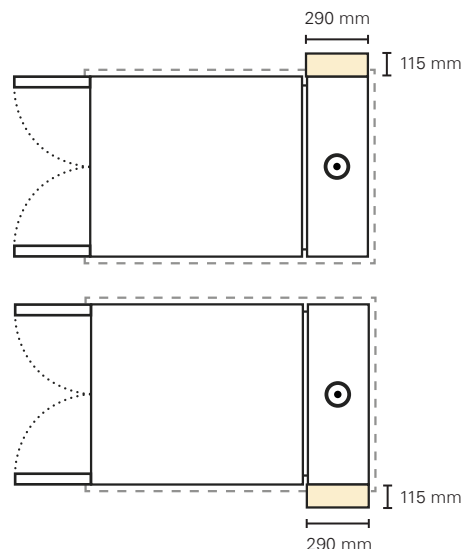
Wireless remote control for the landings.



Example of lift with the electrical cabinet installed on the mast on the ground floor.

## Options for the electrical cabinet

The electrical cabinet can be placed on either side of the mast on the ground floor (standard), or max 3 m from the lift (option).



**Disclaimer:** The product name is Cibes Ascenda in Europe. In Asia and MENA Cibes Ascenda is marketed and sold under other product names, as for example Ascenda and Ascenda Minivator. For more product details and information about the product and its accessory selection, please contact Cibes Lift. This product information is may be subject to changes, and we reserve the right to modify product design and specifications. Therefore, deviations between the product images and information provided in this brochure and the delivered product may occur. The brand Cibes Lift is owned by Cibes Lift Group AB ©.

## BRINGING PEOPLE TOGETHER

That is what we do and what we are all about.

We create lift solutions for greater comfort and joy in life.

Founded in Sweden in 1947, Cibes Lift is a world-leading manufacturer of space-saving, ready-made lifts. High-quality Swedish engineering and Scandinavian design are the secrets behind our success. Today, we are a part of Cibes Lift Group, a global company group with production facilities in Sweden, Poland, USA and China. Sales, installation, and maintenance services are offered by a network of subsidiaries and partners, spread across all continents.

**Cibes**

[cibeslift.com](http://cibeslift.com)