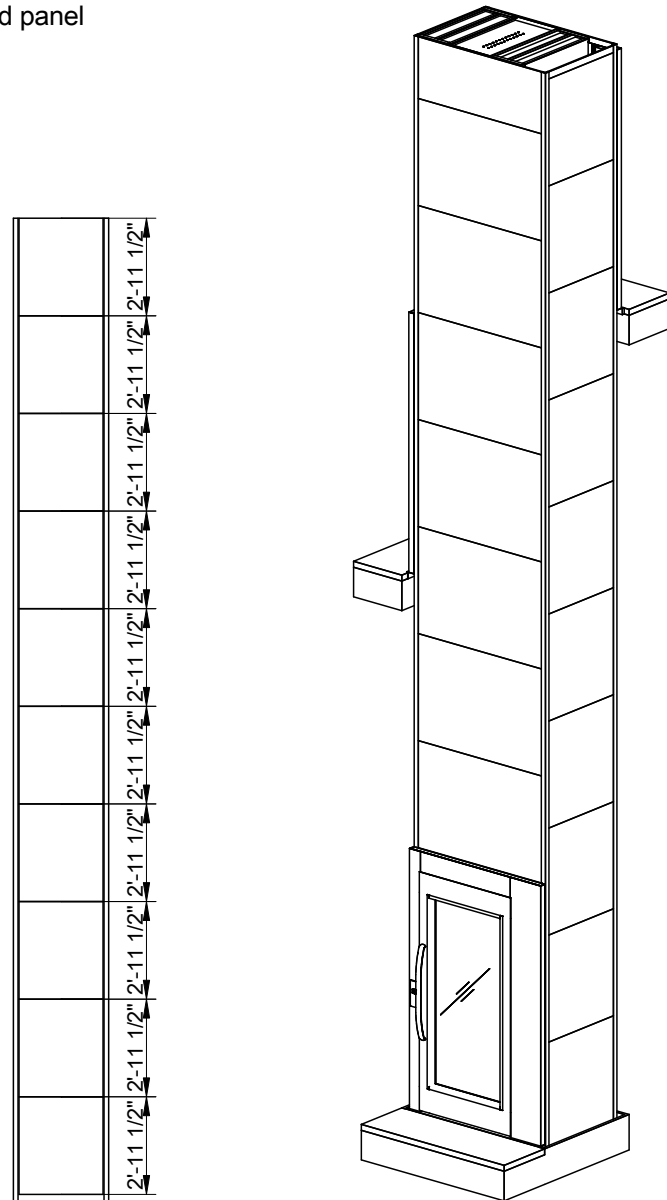


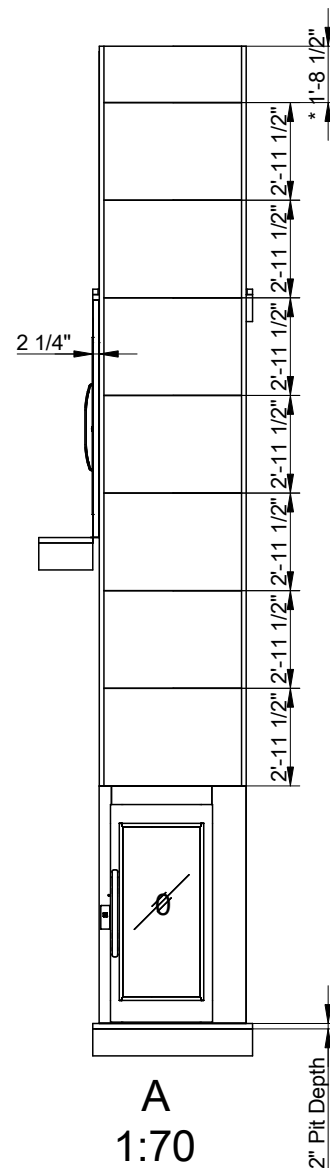
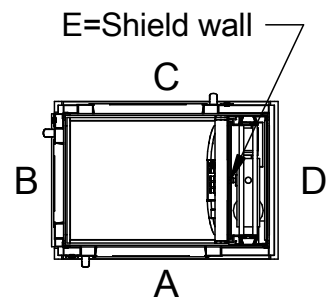
Cutout dimension see sheet  
2, forces see sheet 3

\*To be adapted on site  
\*\*Customized panel



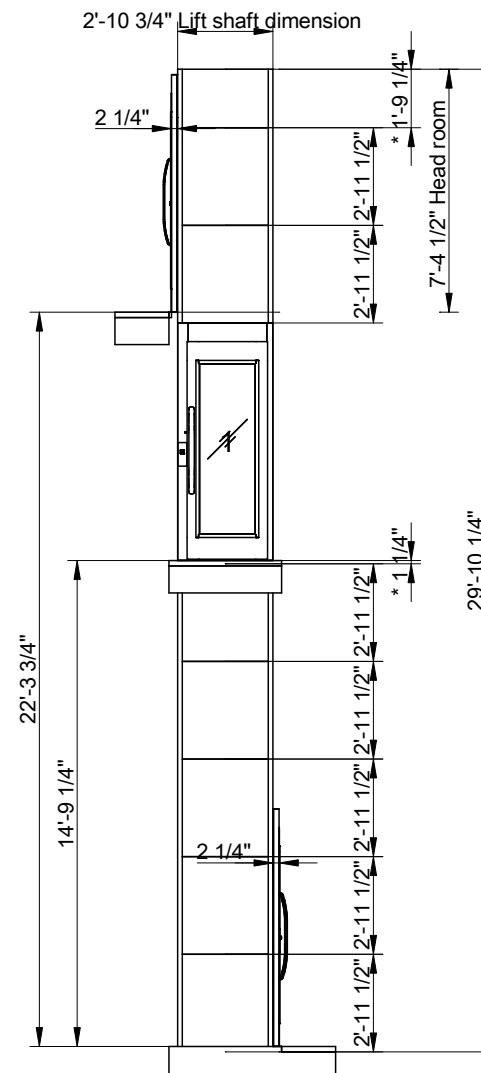
E

Positioning of machinery:

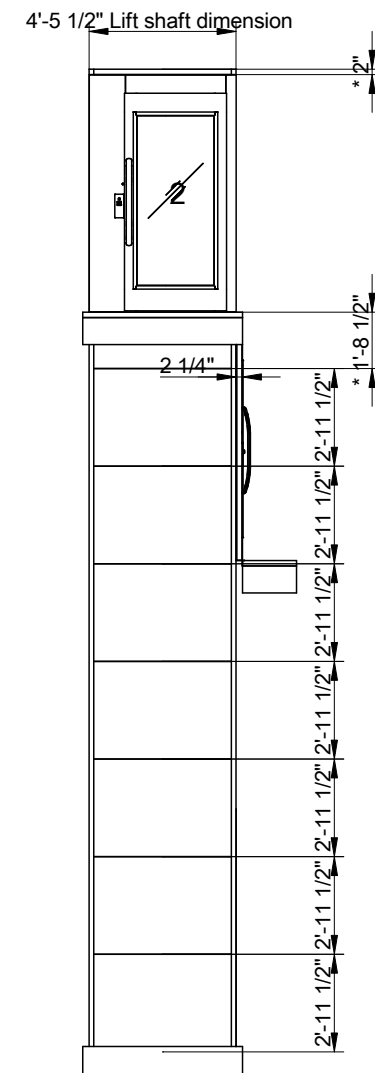


A  
1:70

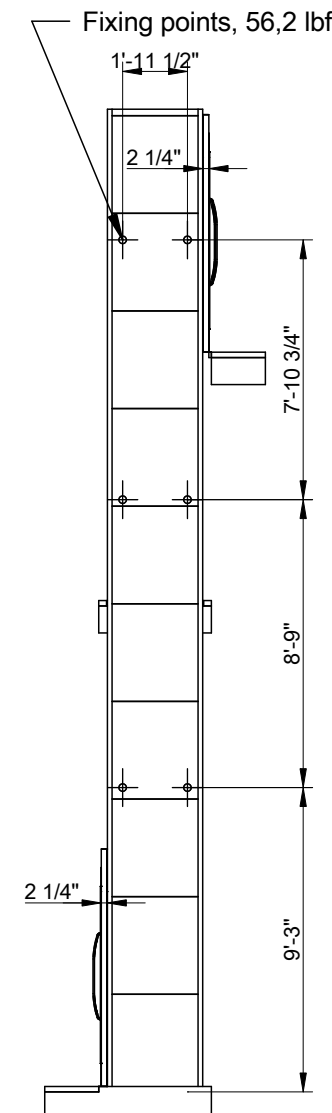
2" Pit Depth



B  
1:70



C  
1:70



D  
1:70

Options

Freq. 1x230/240V 50-60Hz 16A Soft  
Capacity: 661 lb

Approved by  
builder:

European view placement:



EOS ID

Tender no

Order no

Gen. Tolerances

SS-ISO 27681-1 m

Principal drawing

A4000 - 39" \* 33"  
Shaft drawing

Date

sheet

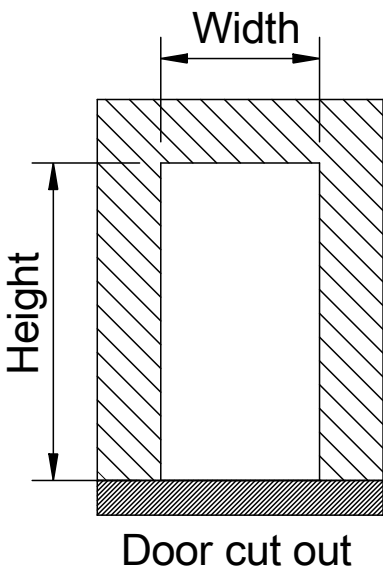
Scale:

A3, 1:70

Shaft cutout sizes

Lift unit installed within a shaft by others

Door front cutout sizes		
Landing	Width	Height
A 0	56 1/4"	88 1/2"
B 1	39"	88 1/2"
C 2	56 1/4"	88 1/2"



Incoming power supply is connected at landing:

For wiring and power supply, refer to the unit's wiring diagrams.  
Ceiling shaft lighting, is independent from the power cable and pulled back into the trench's upper part. Shaft lighting > 50 lux.

NOTE! An effective emergency telephone is required for approved inspection.  
The purchaser is responsible for an active phone line being present prior to the lift installation.

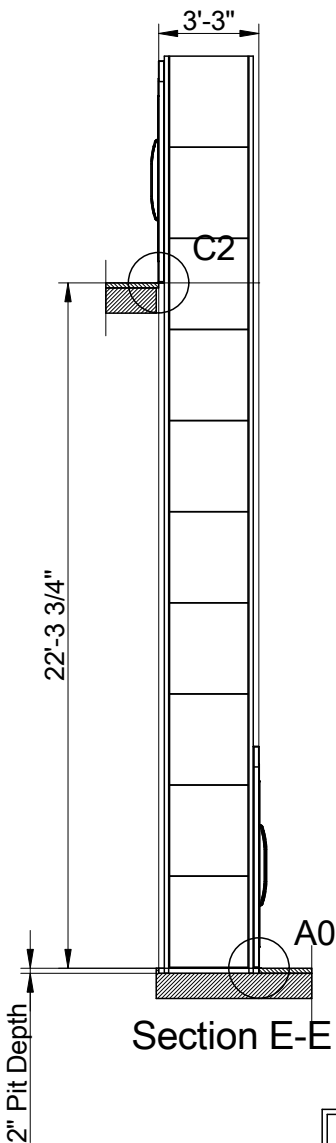
The incoming telephone line is connected to CiLow (TELE). Refer to wiring diagram.

The emergency signal device is powered by the lift's own battery in the event of a power failure.

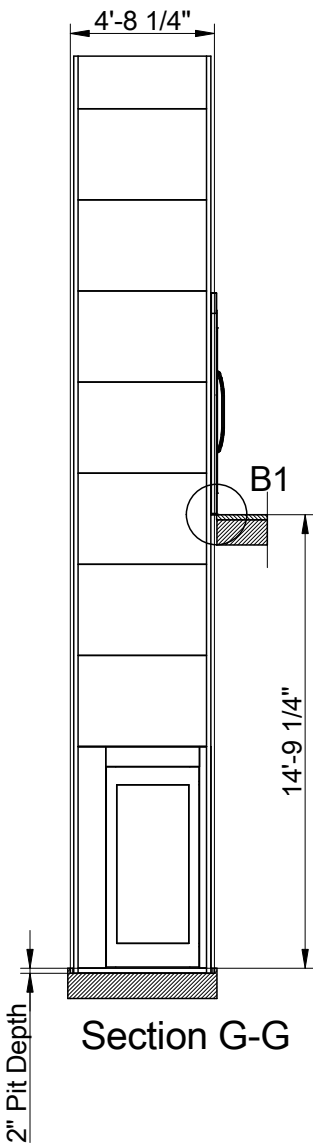
The lift must be equipped with a two-way communication, either via the standard telephone or via the lift telephone, which automatically calls the alarm control center or the like.

NOTE! A lift featuring a frequency converter cannot be directly connected to a RCD.

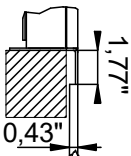
NOTE! The platform lift shall be connected to a dedicated power supply conforming with EN 60204-1:2018, terminating at a main switch and fuse or overload with a means to lock it in the 'off' position or disconnected state



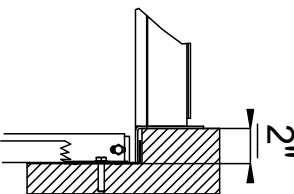
2" pit depth + 1/2", - 0". Bottom surface must be flat,



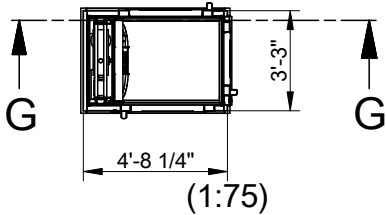
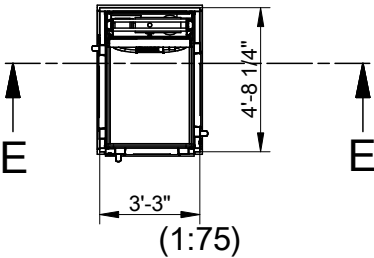
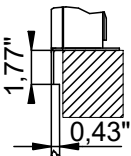
C2 (1:10)



A0 (1:10)



B1 (1:10)



Approved by  
builder:

European view placement:



EOS ID	Principal drawing A4000 - 39" * 33" Cut out sizes		
Tender no			
Order no			
Gen. Tolerances SS-ISO 27681-1 m	Date	sheet	Scale: A3, 1:70



Loads sustained by shaft and platform  
and fixing points bottom frame

Recommended positioning of fixing points.  
Loads per fixing point, F=56,2 lbf

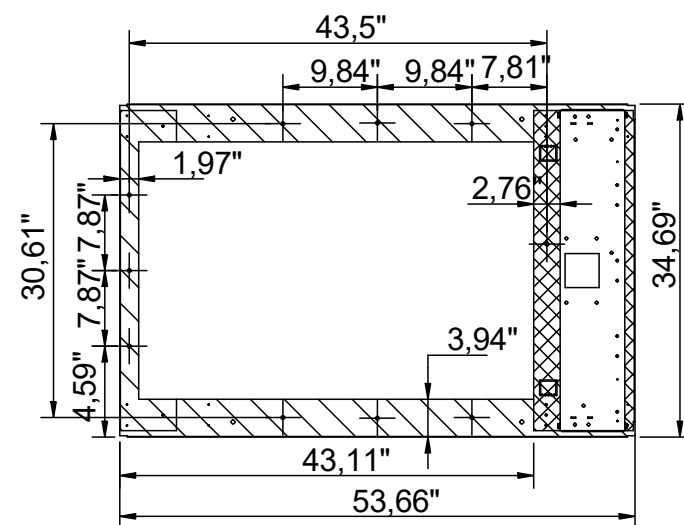
A ( 1 : 5 )



L section force:  
2009,79 lbf  
L section load: 4,25 PSI  
Weight on L-section  
area: 1970,93 lb

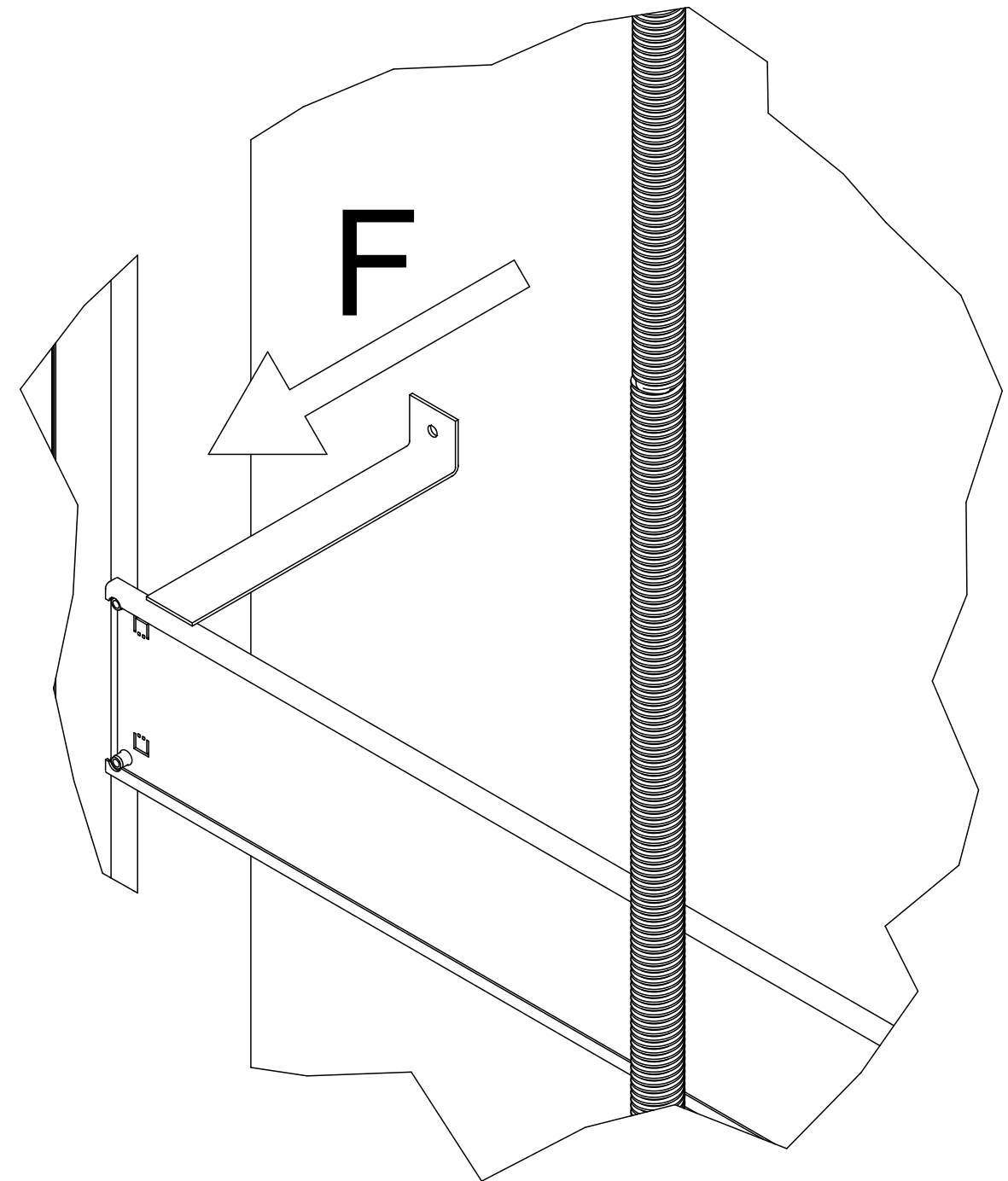
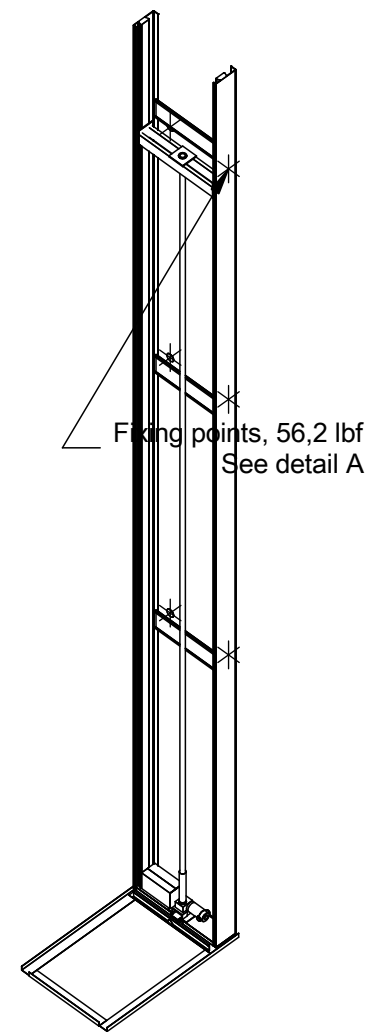


Mast force: 1315,13 lbf  
Mast load: 6,84 PSI  
Weight on mast area: 1289,7 lb



Scale: 1:20

Total weight of the lift equipment  
(including rated load): 3260,64 lb



Approved by  
builder:

European view placement:



Cibės

EOS ID

Tender no

Order no

Gen. Tolerances

SS-ISO 27681-1 m

Principal drawing

A4000 - 39" \* 33"

Loads and forces

Date

sheet

Scale:

A3, 1:70