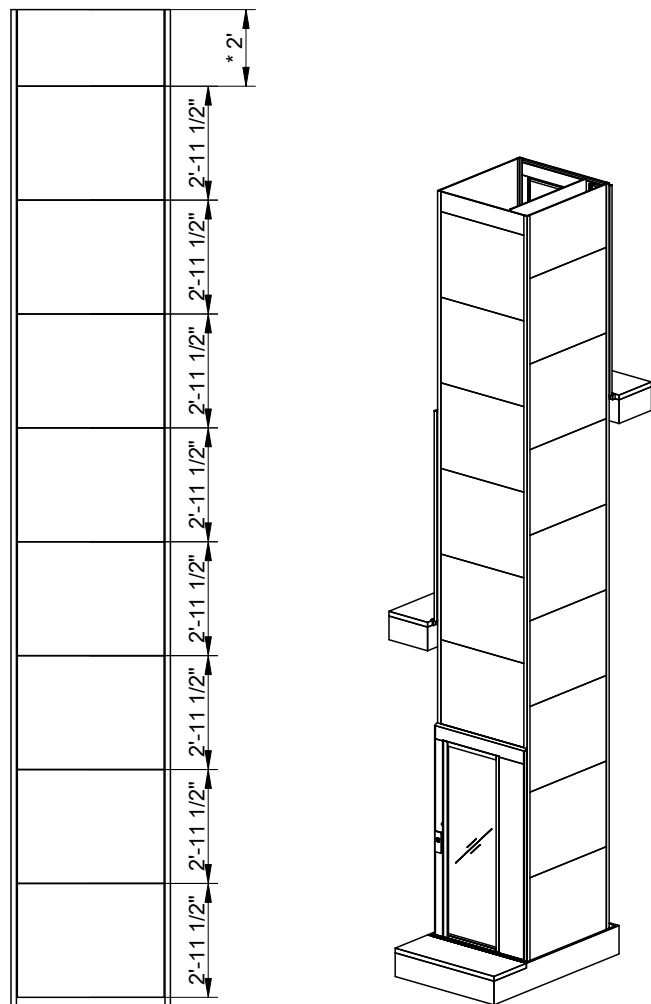


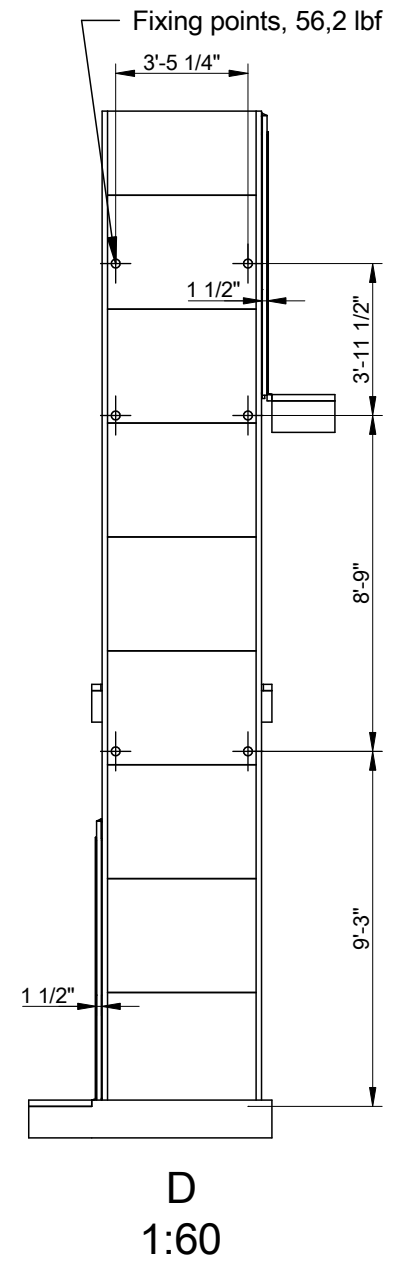
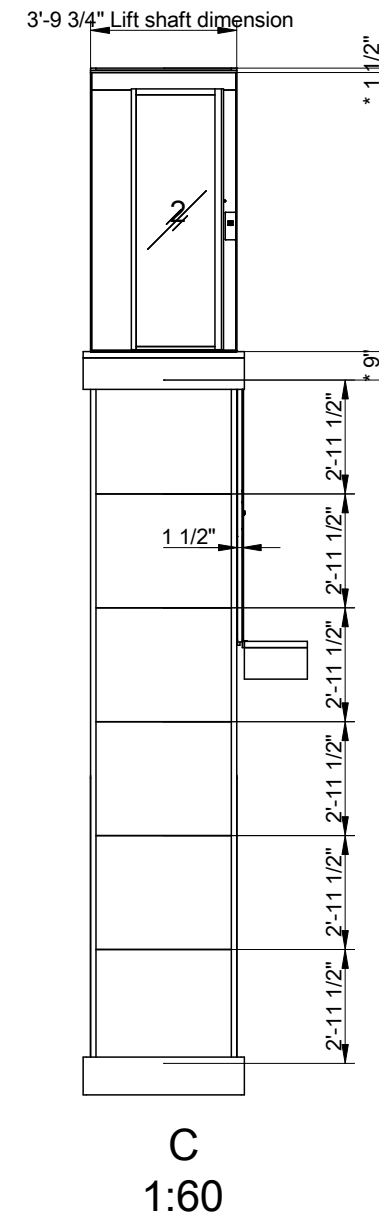
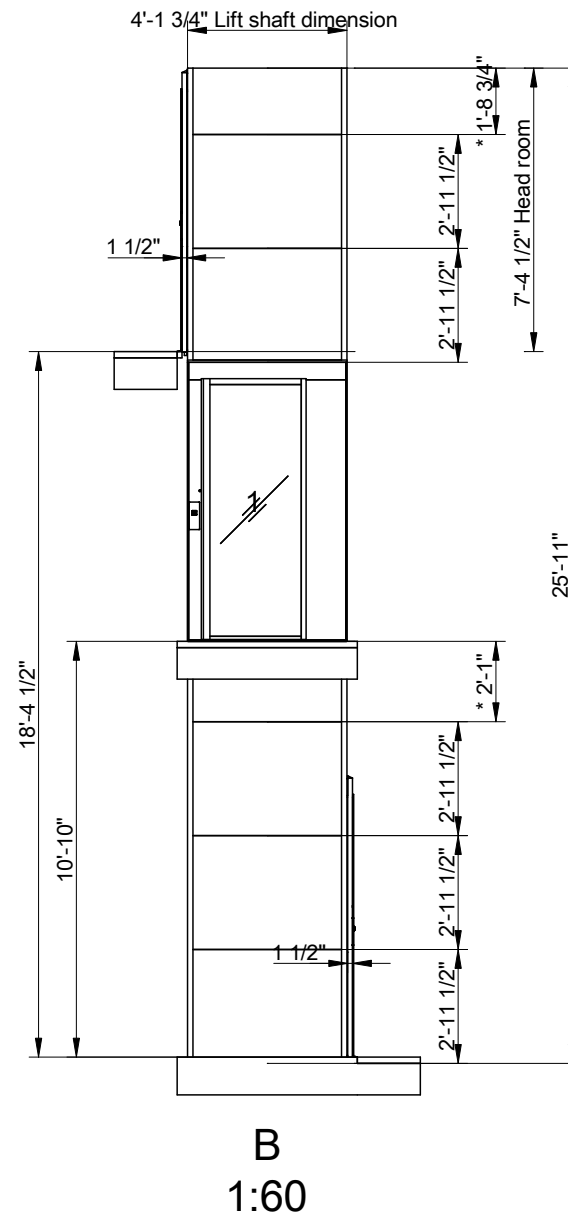
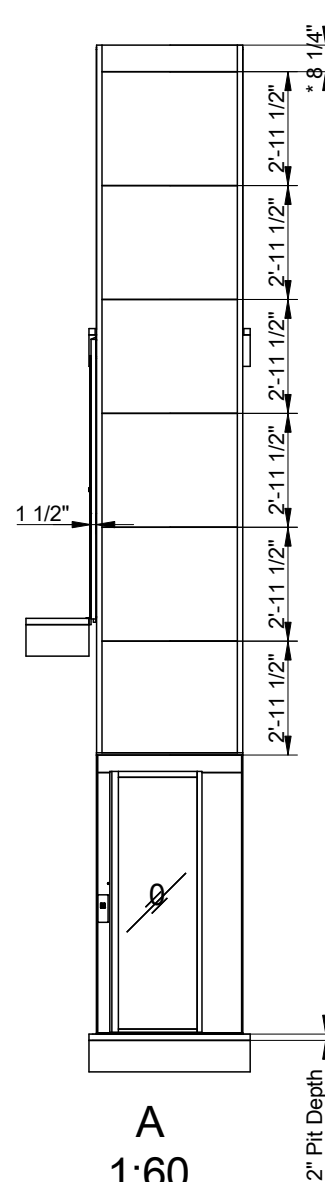
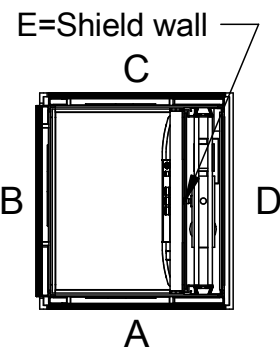
Cutout dimension see sheet
2, forces see sheet 3

*To be adapted on site
**Customized panel



E

Positioning of machinery:



Options
Freq. 1x230/240V 50-60Hz 16A Soft
Capacity: 882 lb

Approved by
builder:

European view placement:



EOS ID

Tender no

Order no

Gen. Tolerances
SS-ISO 27681-1 m

Principal drawing
A 5000 - 31" * 48"
Shaft drawing

Date

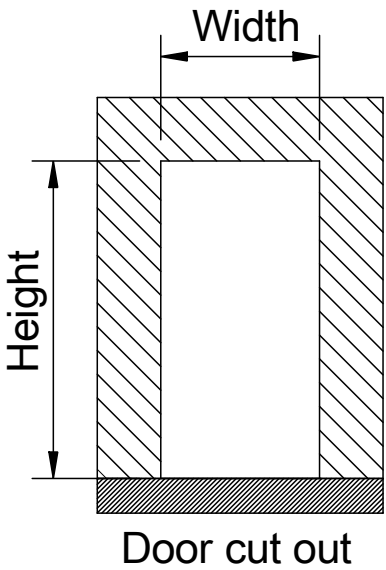
sheet

Scale:
A3, 1:60

Shaft cutout sizes

Lift unit installed within a shaft by others

Door front cutout sizes		
Landing	Width	Height
A 0	48 1/2"	88 1/2"
B 1	54 1/4"	88 1/2"
C 2	48 1/2"	88 1/2"



Incoming power supply is connected at landing:

For wiring and power supply, refer to the unit's wiring diagrams.
Ceiling shaft lighting, is independent from the power cable and pulled back into the trench's upper part. Shaft lighting > 50 lux.

NOTE! An effective emergency telephone is required for approved inspection.
The purchaser is responsible for an active phone line being present prior to the lift installation.

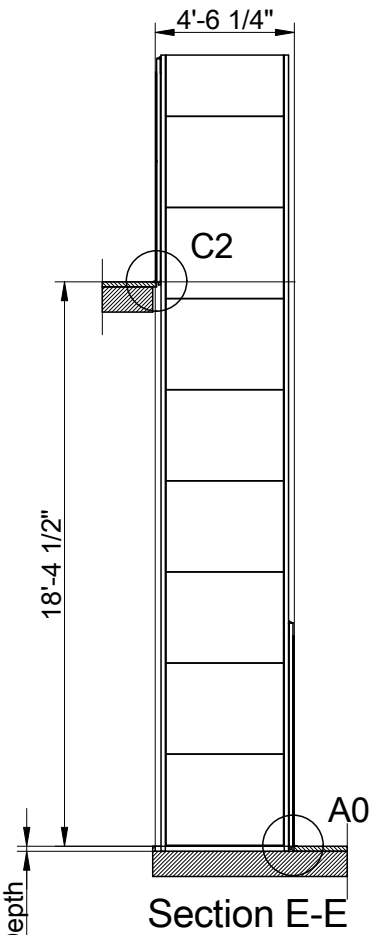
The incoming telephone line is connected to CiLow (TELE). Refer to wiring diagram.

The emergency signal device is powered by the lift's own battery in the event of a power failure.

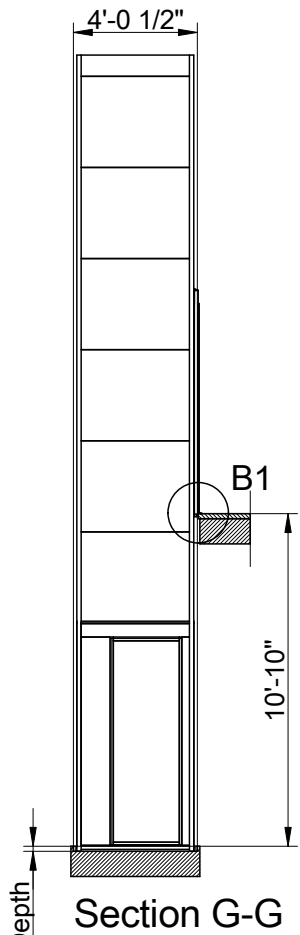
The lift must be equipped with a two-way communication, either via the standard telephone or via the lift telephone, which automatically calls the alarm control center or the like.

NOTE! A lift featuring a frequency converter cannot be directly connected to a RCD.

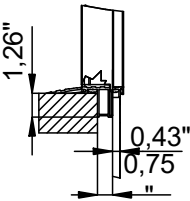
NOTE! The platform lift shall be connected to a dedicated power supply conforming with EN 60204-1:2018, terminating at a main switch and fuse or overload with a means to lock it in the 'off' position or disconnected state



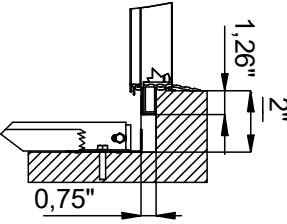
2" pit depth + 1/2", - 0". Bottom surface must be flat,



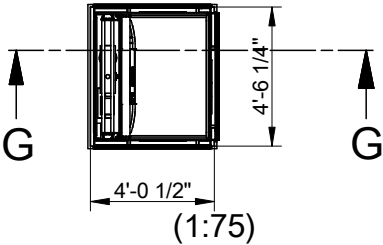
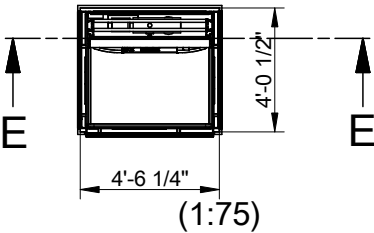
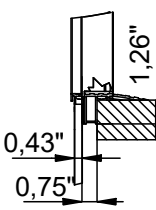
C2 (1:10)



A0 (1:10)



B1 (1:10)

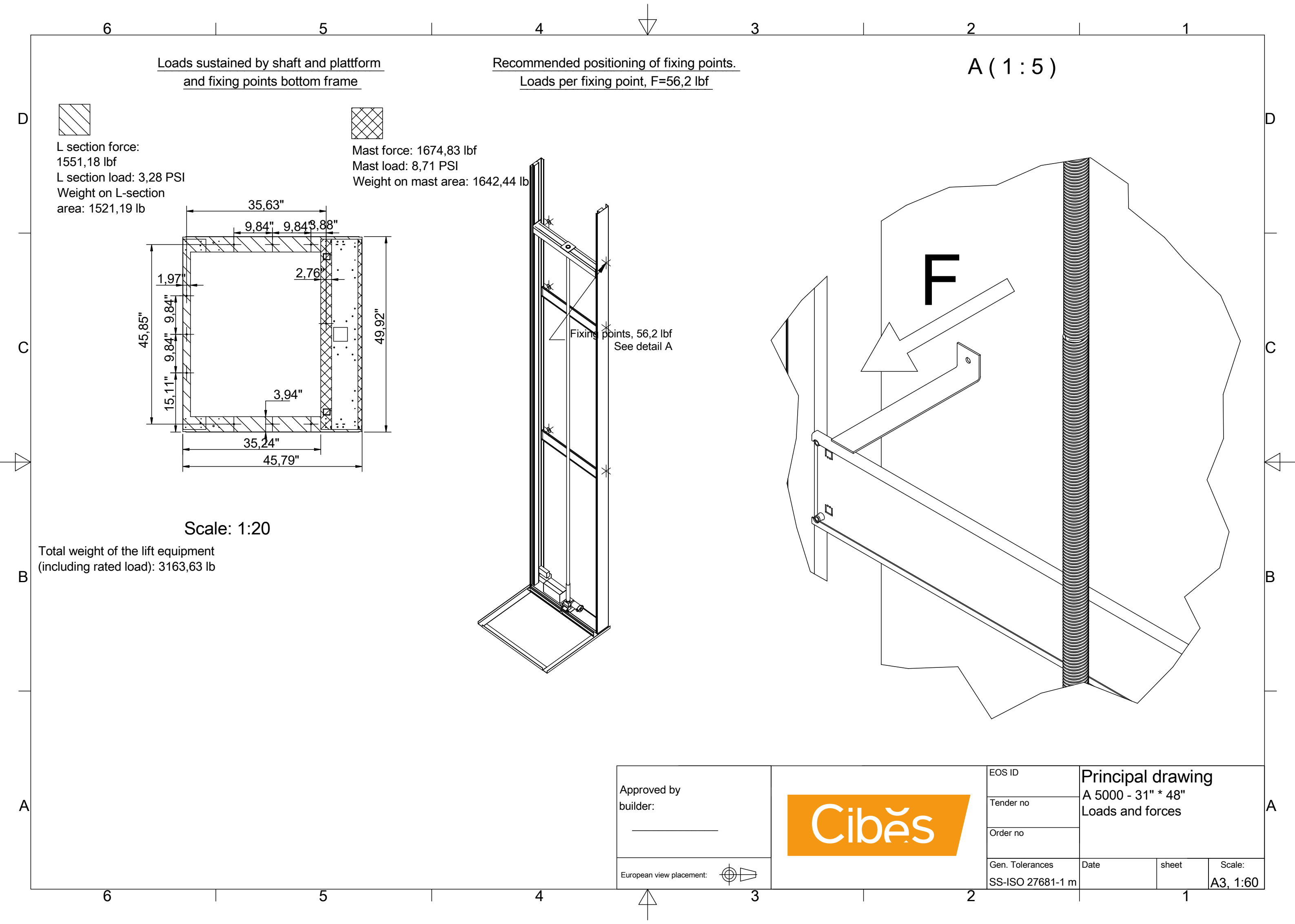



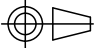
Approved by builder:

European view placement:



EOS ID	Principal drawing A 5000 - 31" * 48" Cut out sizes		
Tender no			
Order no			
Gen. Tolerances SS-ISO 27681-1 m	Date	sheet	Scale: A3, 1:60



Approved by builder: _____		EOS ID		Principal drawing A 5000 - 31" * 48" Loads and forces		
				Tender no		
				Order no		
European view placement: 	Gen. Tolerances SS-ISO 27681-1 m		Date		sheet	Scale: A3, 1:60

