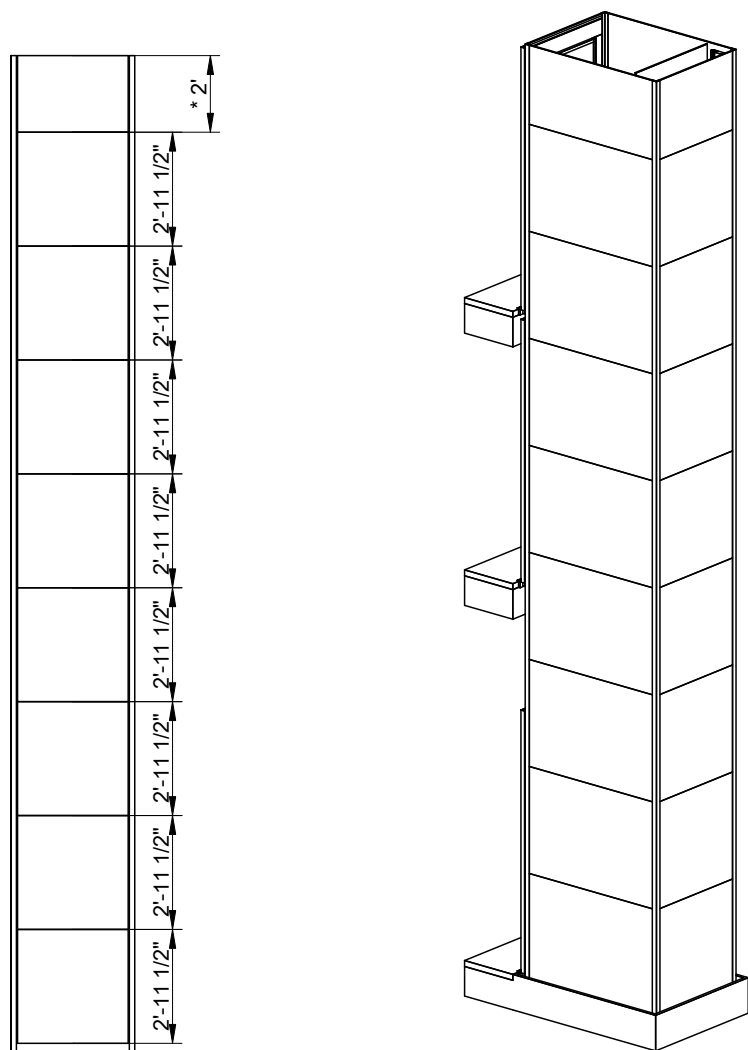


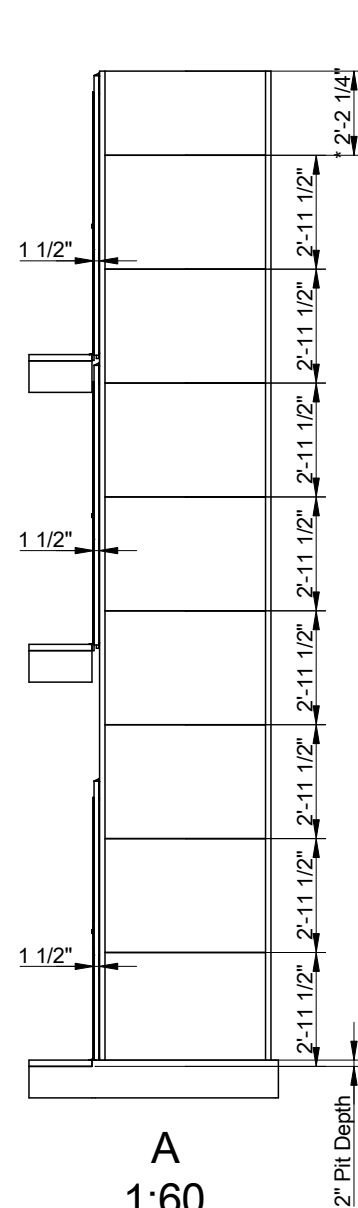
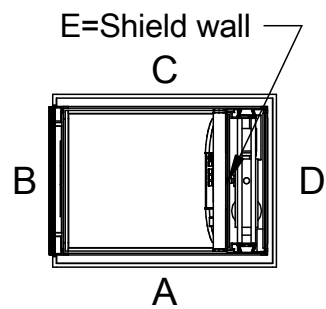
Cutout dimension see sheet  
2, forces see sheet 3

\*To be adapted on site  
\*\*Customized panel

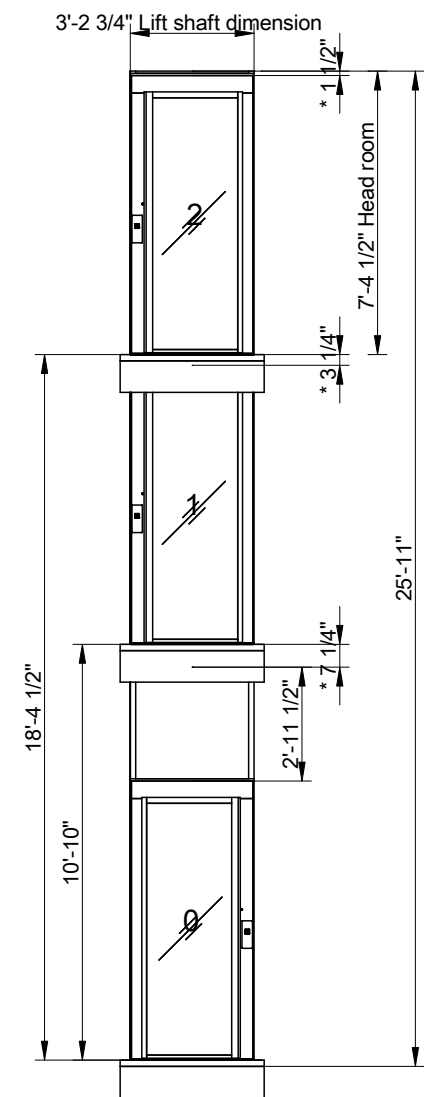


E

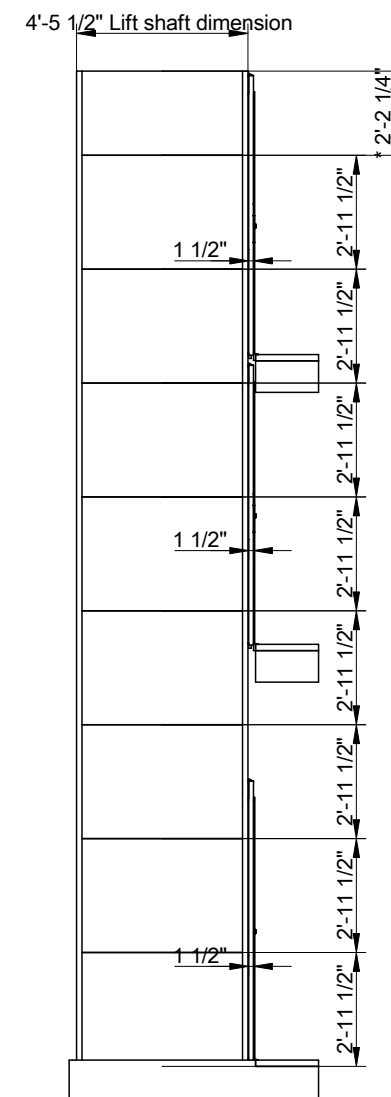
Positioning of machinery:



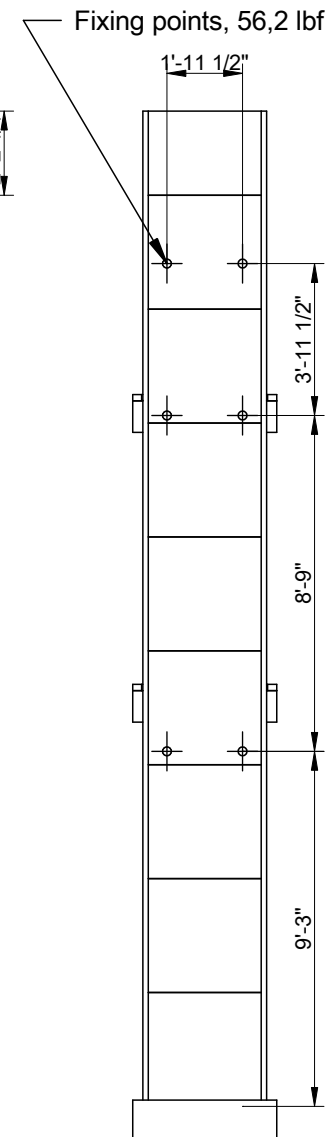
A  
1:60



B  
1:60



C  
1:60



D  
1:60

Options  
Freq. 1x230/240V 50-60Hz 16A Soft  
Capacity: 661 lb

Approved by  
builder:

European view placement:



EOS ID  
Tender no  
Order no

Gen. Tolerances  
SS-ISO 27681-1 m

Principal drawing  
Air - 39" \* 37"  
Shaft drawing

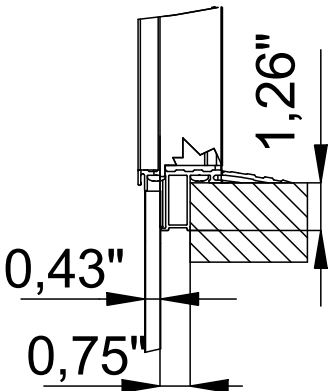
Date  
sheet  
Scale:  
A3, 1:60

Shaft cutout sizes

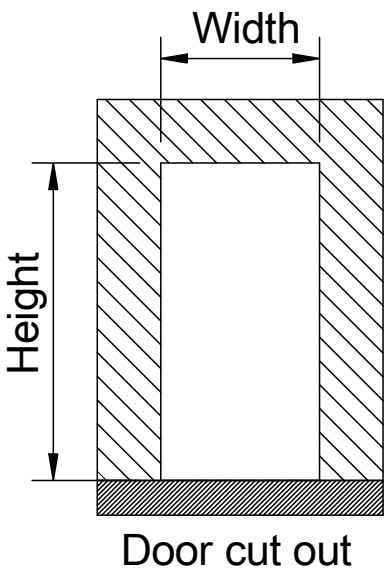
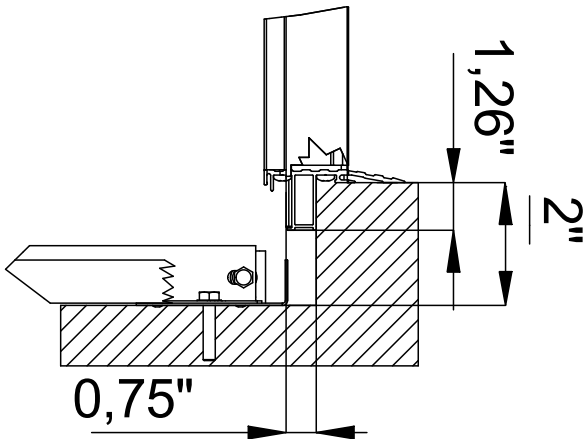
Lift unit installed within a shaft by others

Door front cutout sizes		
Landing	Width	Height
B 0	41"	88 1/2"
B 1	41"	88 1/2"
B 2	41"	88 1/2"

B1,2 (1:5)



B0 (1:5)



Incoming power supply is connected at landing:

For wiring and power supply, refer to the unit's wiring diagrams.  
Ceiling shaft lighting, is independent from the power cable and pulled back into the trench's upper part. Shaft lighting > 50 lux.

NOTE! An effective emergency telephone is required for approved inspection.  
The purchaser is responsible for an active phone line being present prior to the lift installation.

The incoming telephone line is connected to CiLow (TELE). Refer to wiring diagram.

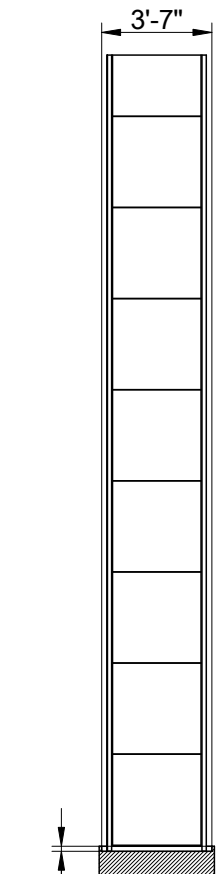
The emergency signal device is powered by the lift's own battery in the event of a power failure.

The lift must be equipped with a two-way communication, either via the standard telephone or via the lift telephone, which automatically calls the alarm control center or the like.

NOTE! A lift featuring a frequency converter cannot be directly connected to a RCD.

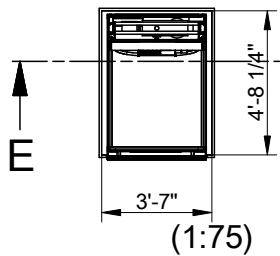
NOTE! The platform lift shall be connected to a dedicated power supply conforming with EN 60204-1:2018, terminating at a main switch and fuse or overload with a means to lock it in the 'off' position or disconnected state

	Principal drawing		
	Air - 39" * 37"		
	Cut out sizes		
s	Date	sheet	Scale:
1-1 m			A3, 1:60

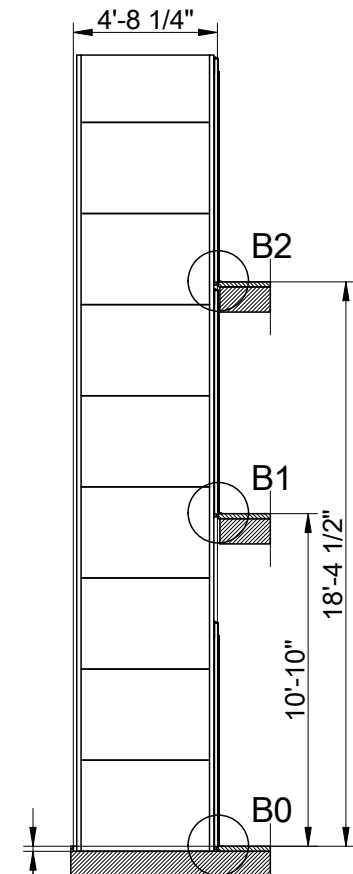


Section E-E

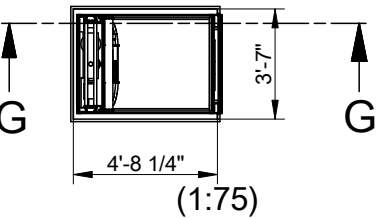
2" pit depth + 1/2", - 0". Bottom surface must be flat,



(1:75)



Section G-G



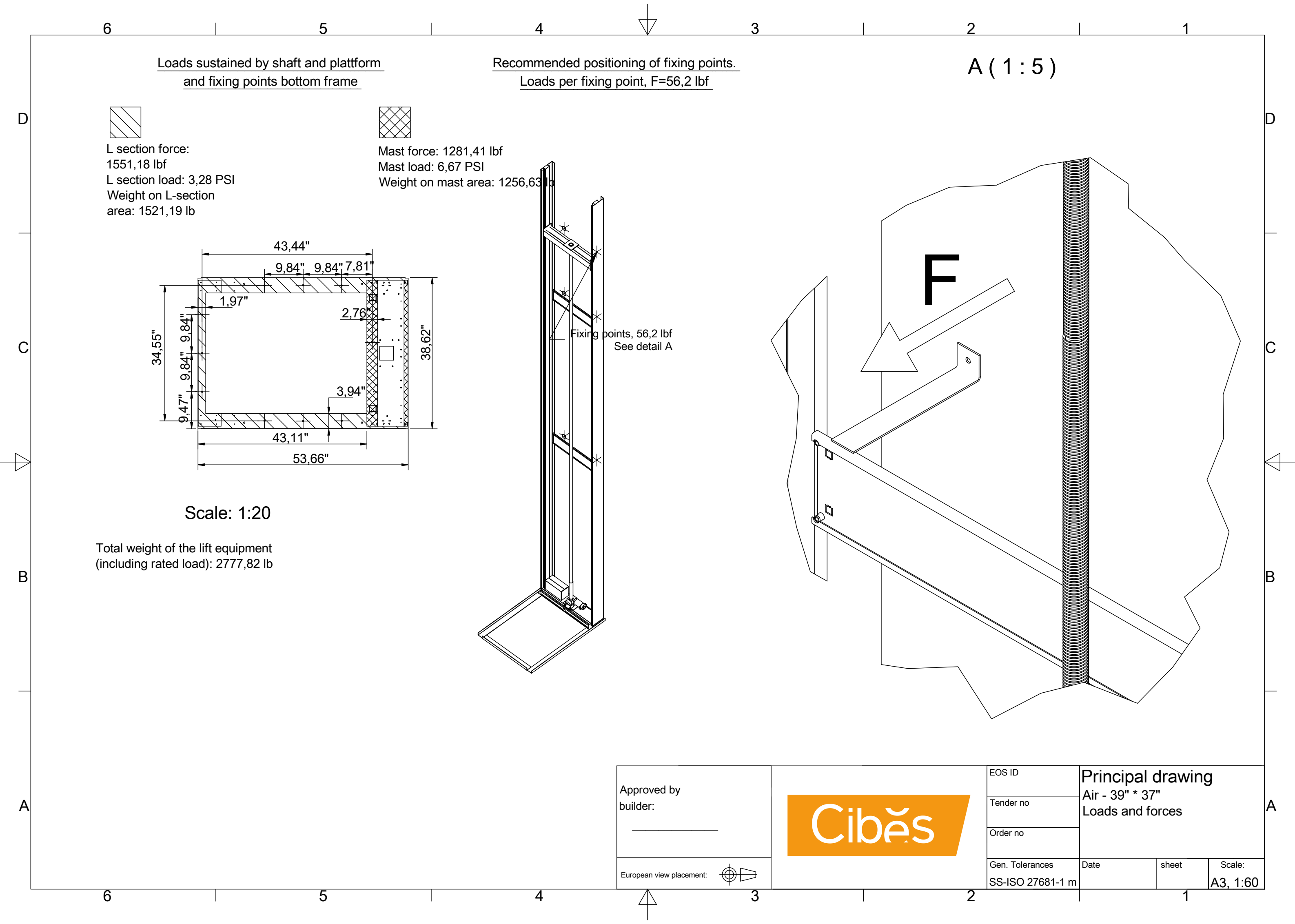
(1:75)



Approved by  
builder:

European view placement:



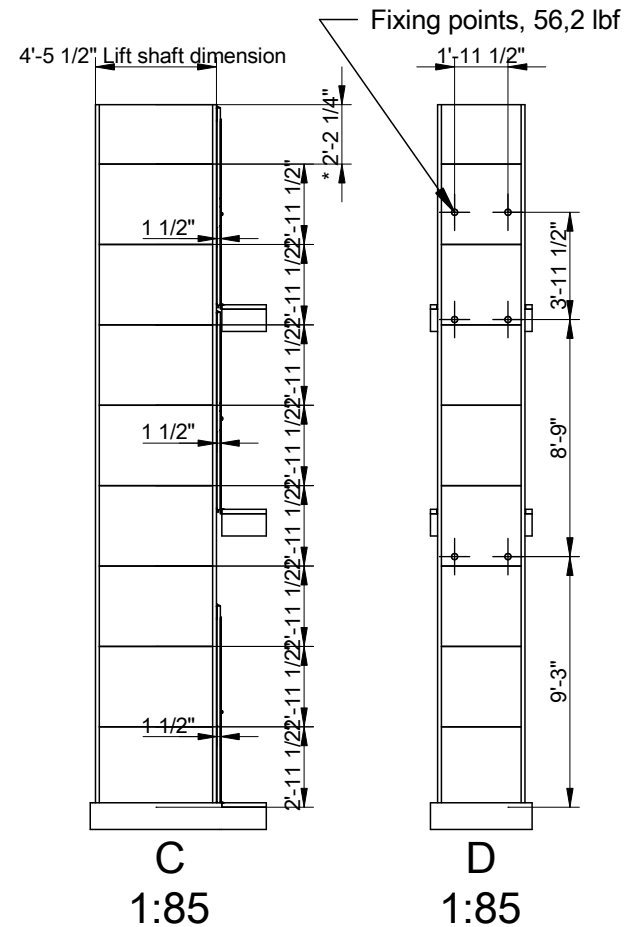
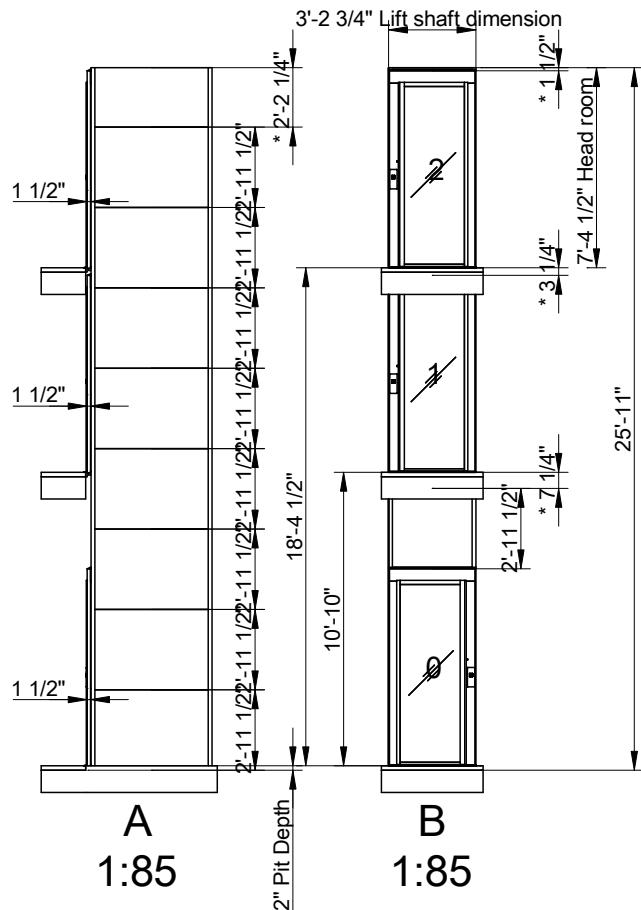
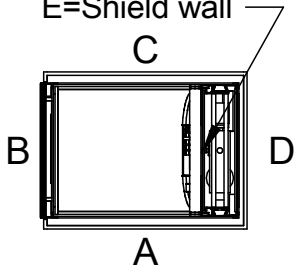
EOS ID
Tender no
Order no
Gen. Tolerances
SS-ISO 27681-1 m



Approved by builder:  _____		EOS ID		Principal drawing Air - 39" * 37" Loads and forces		
		Tender no				
		Order no				
European view placement: 	Gen. Tolerances SS-ISO 27681-1 m		Date	sheet	Scale: A3, 1:60	

Positioning of machinery:

E=Shield wall



Approved by  
builder:

European view placement:



Cibăș

EOS ID

Tender no

Order no

Gen. Tolerances

SS-ISO 27681-1 m

Principal drawing

Air - 39" \* 37"

Shaft drawing

Date

sheet

Scale:

A4,