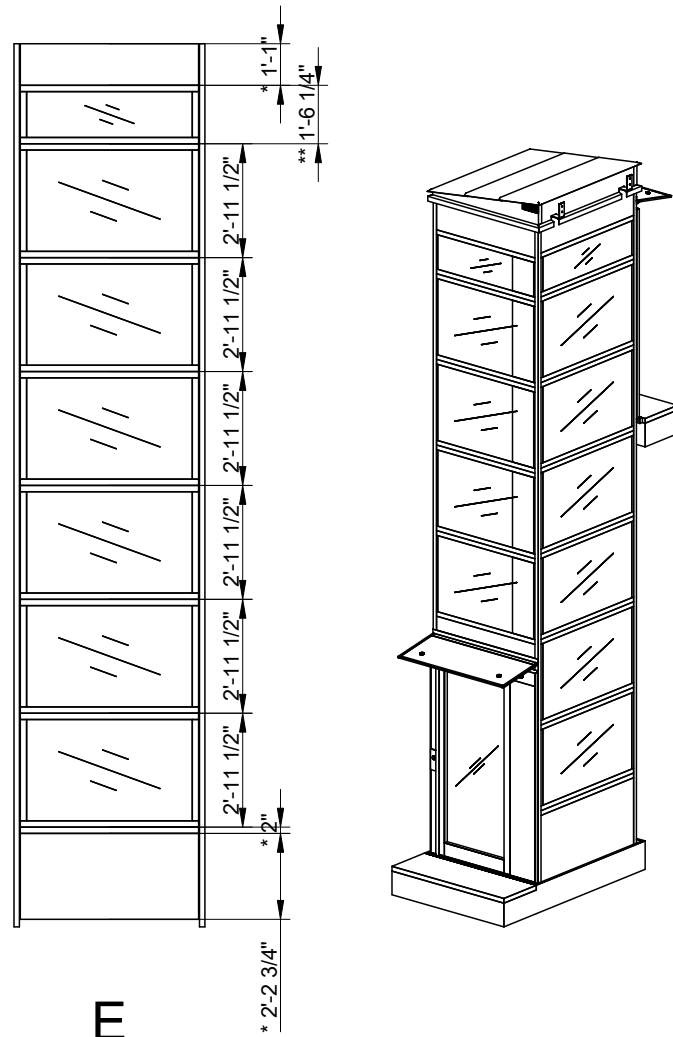


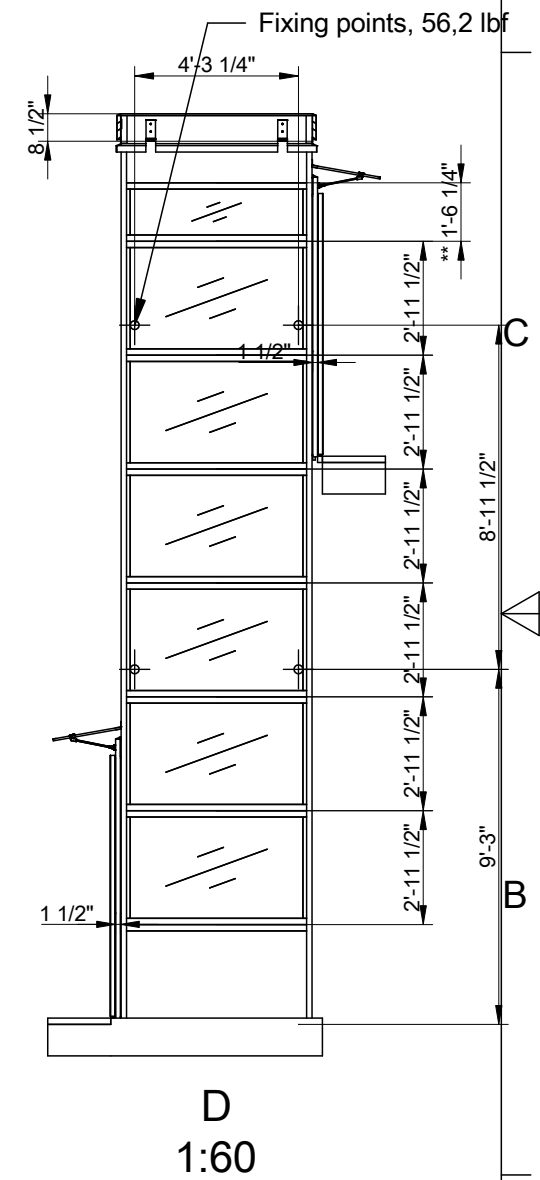
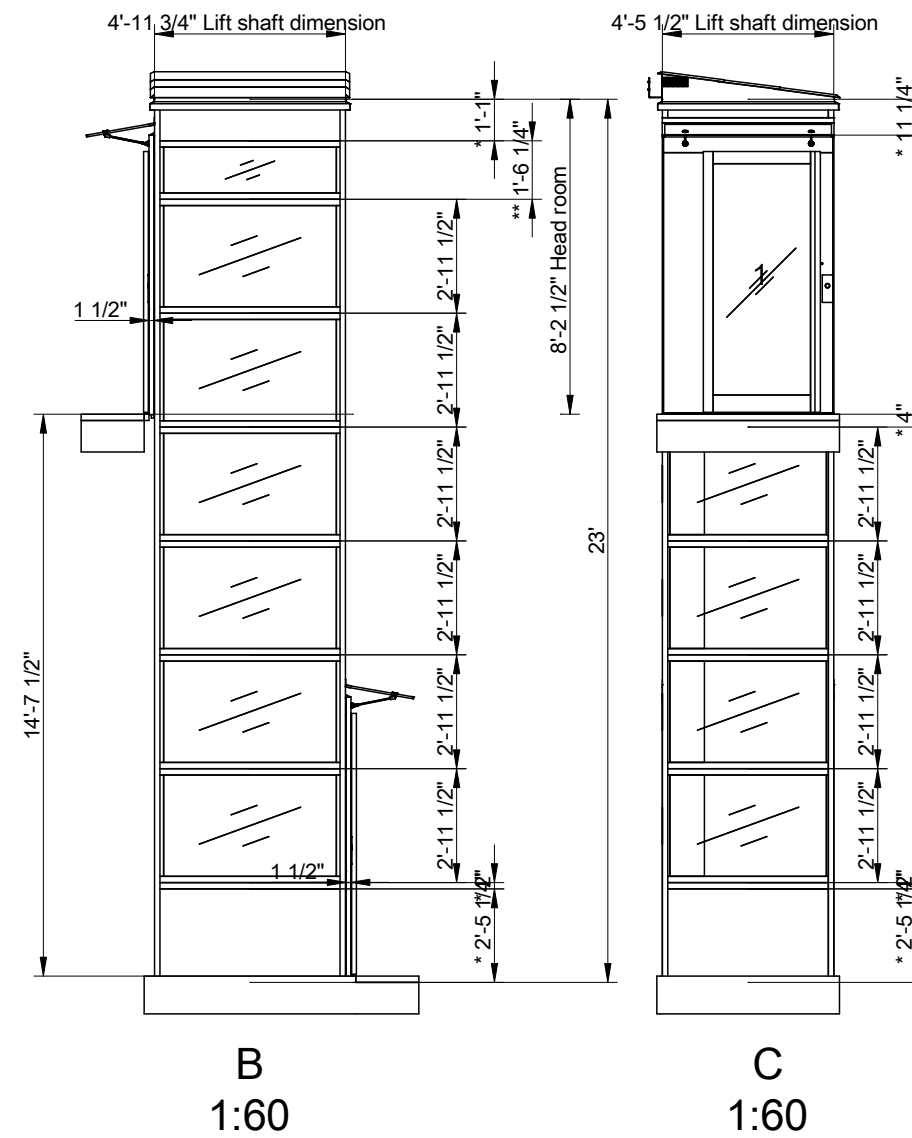
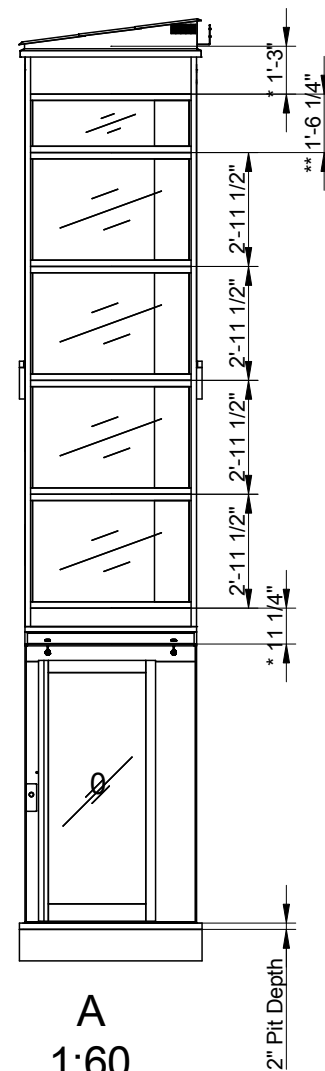
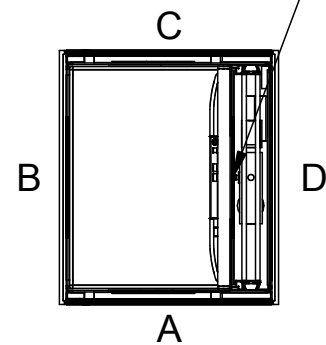
Cutout dimension see sheet
2, forces see sheet 3

*To be adapted on site
**Customized panel



Positioning of machinery:

E=Shield wall



Options
Freq. 1x230/240V 50-60Hz 16A Soft
Capacity: 882 lb

Approved by
builder:

European view placement:



Cibăș

EOS ID

Tender no

Order no

Gen. Tolerances
SS-ISO 27681-1 m

Principal drawing
Outdoor - 39" * 58"
Shaft drawing

Date

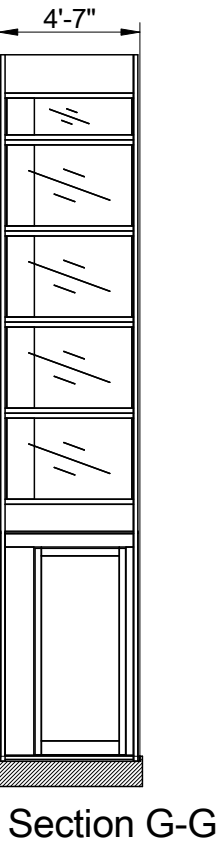
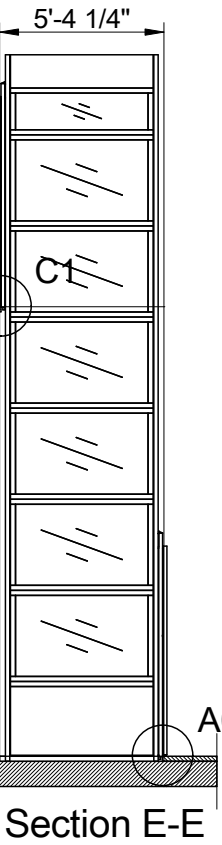
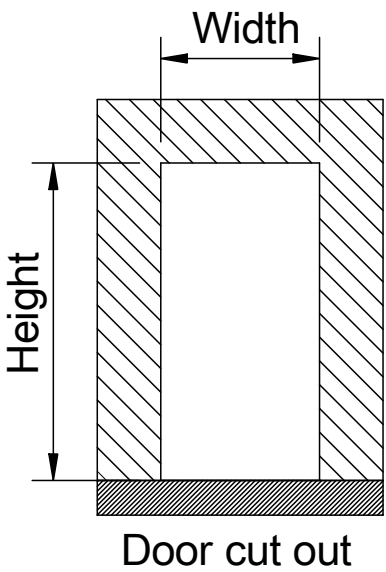
sheet

Scale:
A3, 1:60

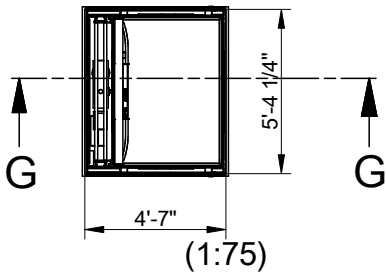
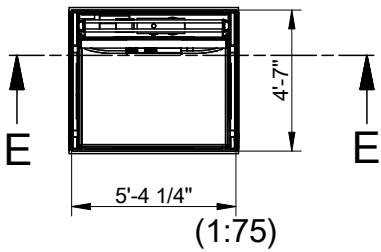
Shaft cutout sizes

Lift unit installed within a shaft by others

| Door front cutout sizes | | |
|-------------------------|-------|---------|
| Landing | Width | Height |
| A 0 | 55" | 88 1/2" |
| C 1 | 55" | 88 1/2" |
| | | |

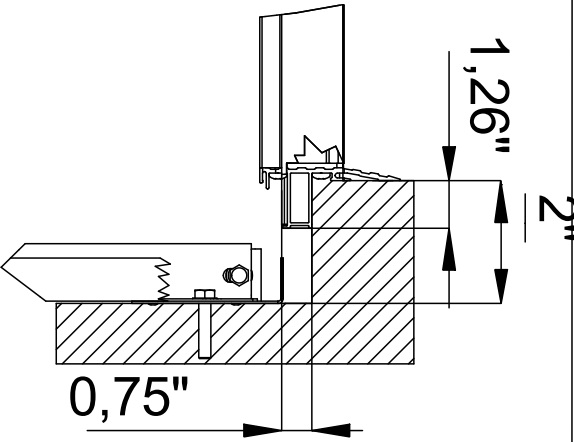
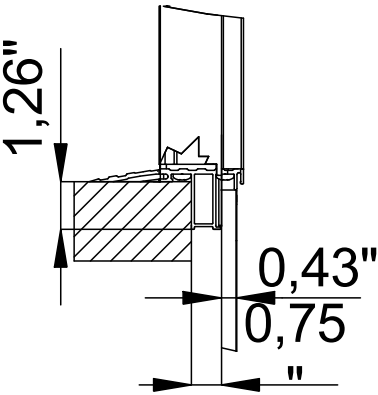


2" pit depth + 1/2", - 0". Bottom surface must be flat,



A0 (1:5)

C1 (1:5)



Incoming power supply is connected at landing:

For wiring and power supply, refer to the unit's wiring diagrams.
Ceiling shaft lighting, is independent from the power cable and pulled back into the trench's upper part. Shaft lighting > 50 lux.

NOTE! An effective emergency telephone is required for approved inspection.
The purchaser is responsible for an active phone line being present prior to the lift installation.

The incoming telephone line is connected to CiLow (TELE). Refer to wiring diagram.

The emergency signal device is powered by the lift's own battery in the event of a power failure.

The lift must be equipped with a two-way communication, either via the standard telephone or via the lift telephone, which automatically calls the alarm control center or the like.

NOTE! A lift featuring a frequency converter cannot be directly connected to a RCD.

NOTE! The platform lift shall be connected to a dedicated power supply conforming with EN 60204-1:2018, terminating at a main switch and fuse or overload with a means to lock it in the 'off' position or disconnected state

Approved by builder:

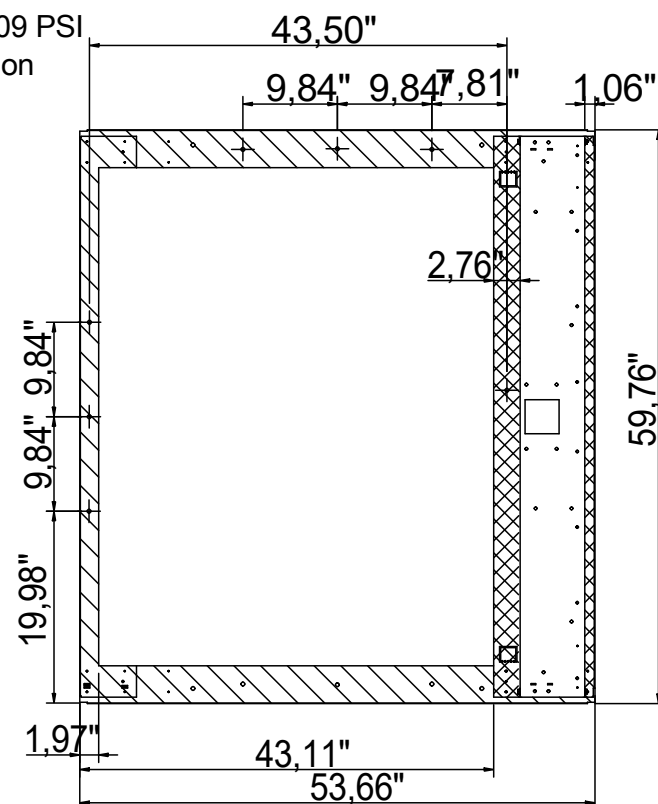
European view placement:

| | | | |
|-------------------------------------|---|-------|--------------------|
| EOS ID | Principal drawing Outdoor - 39" * 58" Cut out sizes | | |
| Tender no | | | |
| Order no | | | |
| Gen. Tolerances SS-ISO 27681-1 m | Date | sheet | Scale: A3, 1:60 |

Loads sustained by shaft and platform
and fixing points bottom frame



L section force:
2405,46 lbf
L section load: 5,09 PSI
Weight on L-section
area: 2358,95 lb



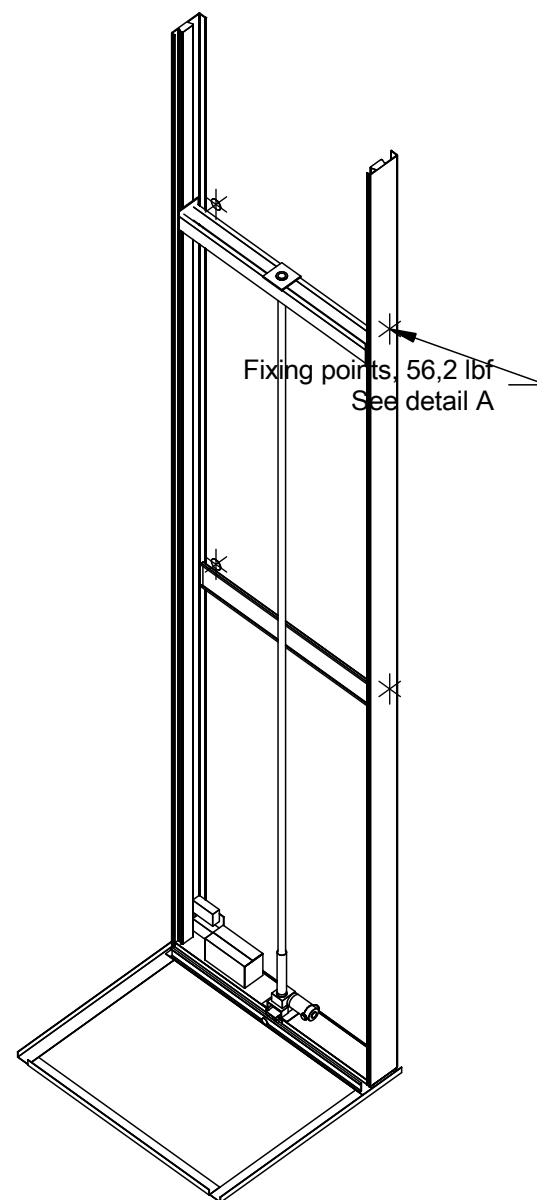
Scale: 1:20

Total weight of the lift equipment
(including rated load): 4080,76 lb

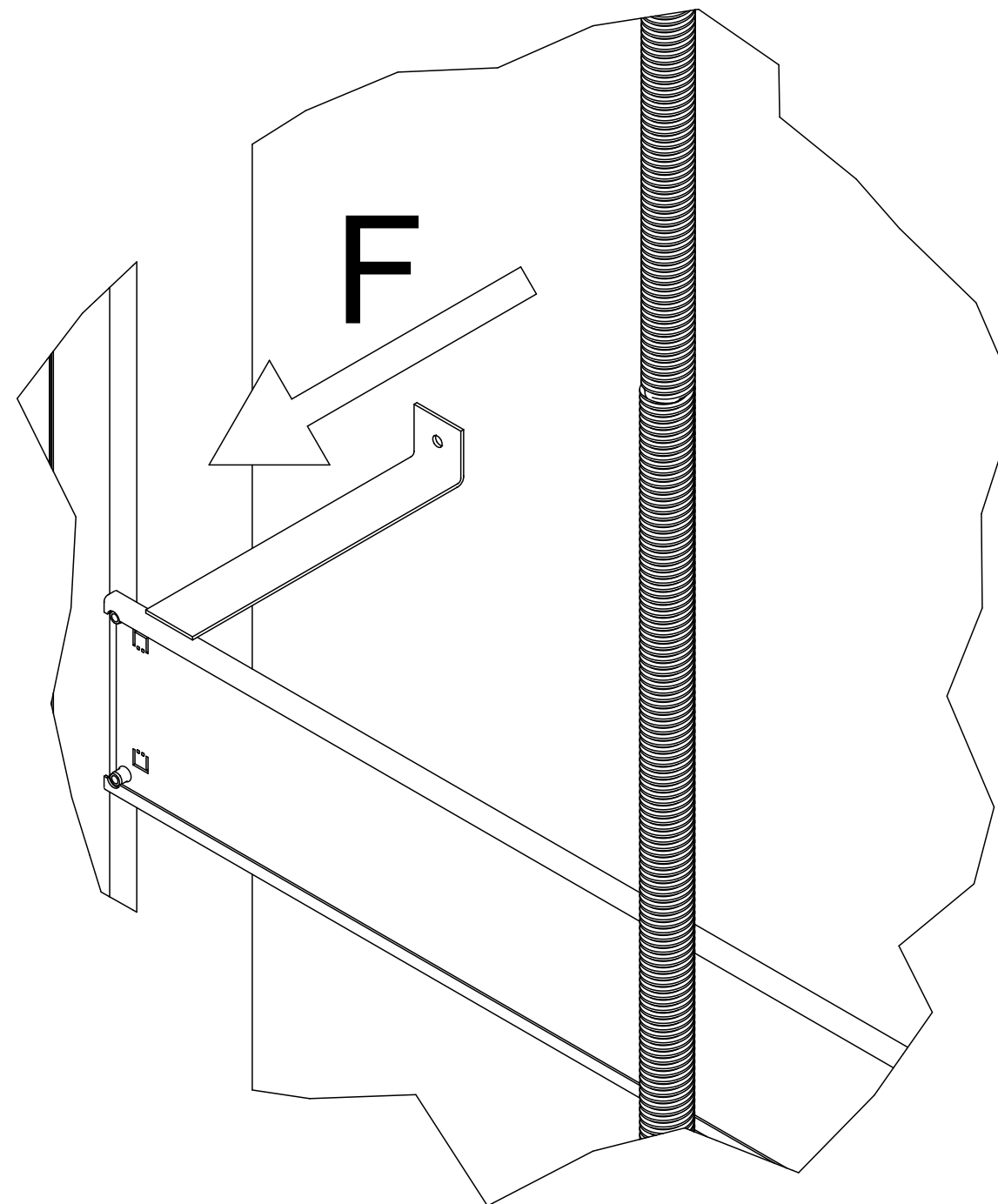
Recommended positioning of fixing points.
Loads per fixing point, F=56,2 lbf



Mast force: 1643,35 lbf
Mast load: 8,55 PSI
Weight on mast area: 1611,58 lb



A (1:5)



Approved by
builder:

European view placement:



Cibės

EOS ID

Tender no

Order no

Gen. Tolerances

SS-ISO 27681-1 m

Principal drawing
Outdoor - 39" * 58"
Loads and forces

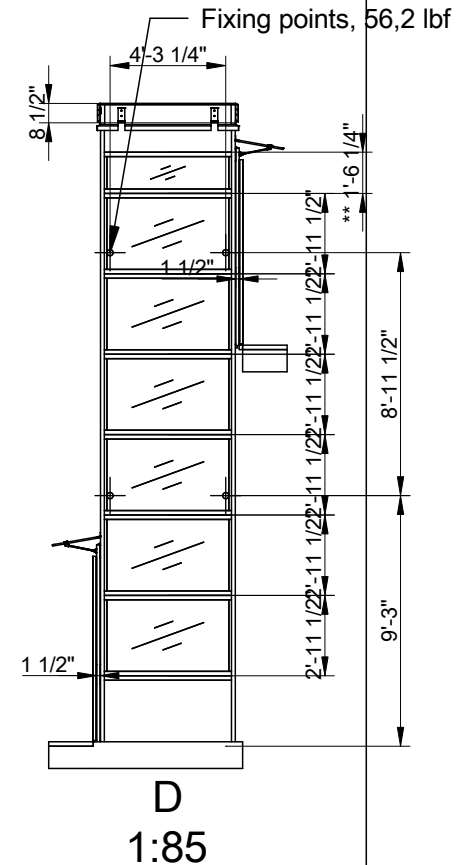
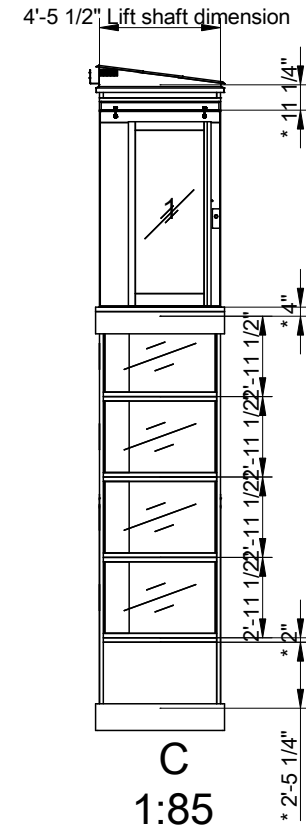
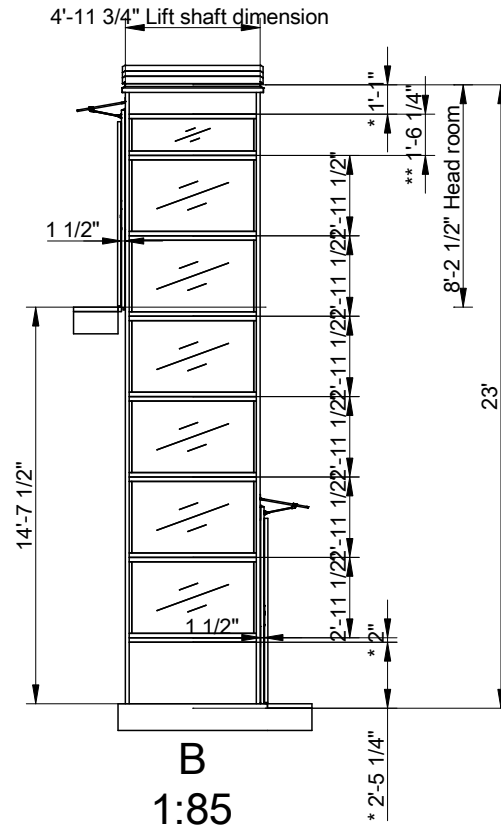
Date


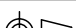
sheet

Scale:

A3, 1:60

A schematic diagram of a shielded container. It shows a rectangular structure with a thick outer wall (labeled E=Shield wall) and a thinner inner wall (labeled C). The interior is divided into two main sections: a large open space on the left (labeled B) and a narrower compartment on the right (labeled D). The bottom of the container is labeled A. A line points from the label E to the outer wall, and another line points from the label C to the inner wall.



| | | | | | |
|--|---|-------------------------------------|--|-------|----------------------|
| Approved by builder: _____ |  | EOS ID | Principal drawing Outdoor - 39" * 58" Shaft drawing | | |
| | | Tender no | | | |
| | | Order no | | | |
| European view placement:  | | Gen. Tolerances SS-ISO 27681-1 m | Date | sheet | Scale: A4. |