

Symmetry

Shaftless Elevator



Shaftless Elevator show in custom Black finish



The Most Customizable Shaftless Elevator On The Market

Whether you are looking at new construction or retrofitting an existing home, you are looking for craftsmanship and long-term quality. Cibes Symmetry provides both.

Symmetry Shaftless Elevator Advantages:

- Battery Power for Use During Power Outages
- Compact, Space-Saving Design
- Custom Options Available
- Integrated Sliding Door
- Minimal Home Alterations
- Uses a Standard 120 VAC Outlet
- No Pit or Machine Room Required

Made in the U.S.A.

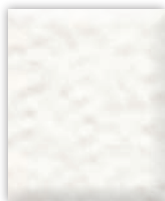


Features and Options

Car/Gate Finish



Grey
(standard)



Architectural
White

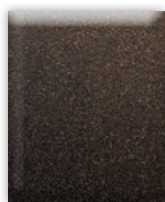


RAL

Handrail Options



Brushed
Stainless Steel



Vintage
Bronze



Black



Birch
Unfinished

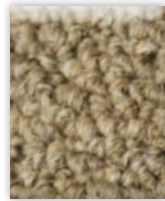


Red Oak
Unfinished

Carpet Options



Grey
(standard)



Tan

Vision Panel

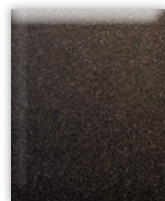


Clear
(standard)

Fixture Options



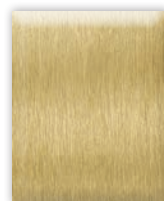
Brushed
Stainless Steel
(standard)



Vintage
Bronze

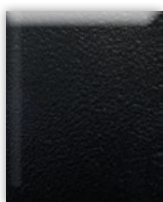


Black



Brushed Brass

Accent Panel Options



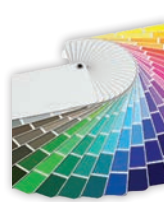
Black
(standard)



Grey



Brushed
Stainless Steel



RAL

Lights



Black
(standard)



White



Chrome

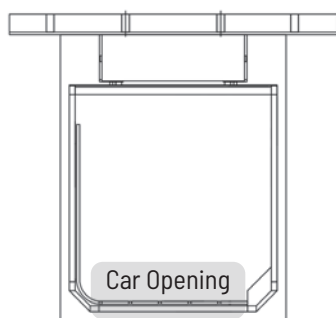


To see more custom elevator options please reach out to your local Cibes Symmetry representative.

Colors illustrated may vary due to print or digital technology.

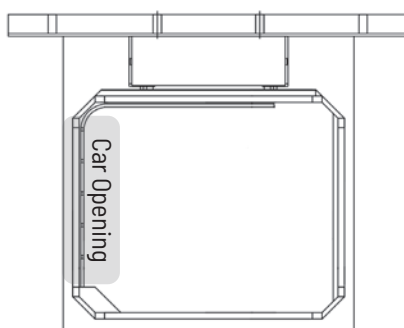
Cibēs | symmetry

Single Front Opening



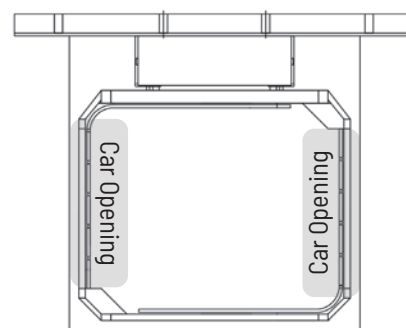
33"W x 35"D x 76"H
33"W x 26"D x 76"H

Single Side Opening



33"W x 39"D x 76"H
Left (shown) or Right

Opposite Opening



33"W x 39"D x 76"H

Standard Features

- Rated Capacity: 400 lbs.
- Speed: 14 fpm
- Stops: 2
- Opening: Single Front
- Drive System: Winding Drum
- Power: Battery system charged by standard 120 VAC electrical circuit
- Battery power allows travel during power outages
- Travel: Up to 10' (minimum 84")
- Car Size: 33"W x 35"D x 76"H
- Slimline phone
- Flip down seat
- Overhead: 92½" minimum
- Lighting: (2) low voltage Warm White with Black trim rings
- Finish: Grey or Architectural White powder-coat
- Vision Panels: Clear polycarbonate
- Entry: Integrated sliding door
- Floor cutout liner kit
- Integral handrail
- Carpet: Grey or Tan
- Warranty: 3-year (2-year on batteries)

Safety Features

- Pressure sensitive safety system
- Car door locking device
- Emergency stop switch and alarm

Controls

- Operation: Constant pressure
- Car Operating Panel (COP): Up/down buttons, emergency stop, alarm, and light switch
- Landing Controls: Flush mounted with up/down buttons
- Communication: Telephone located in the car (must be wired to home phone line)

Optional Features

- Front opening car size
 - 33"W x 26"D x 76"H
- Single side or opposite opening
 - 33"W x 39"D x 76"H
- Travel: 14' maximum
- Custom colors available
- Remote control fob
- Lighting: (4) low voltage Warm White
- Lighting: Chrome or White trim rings
- Keyswitch on COP and/or Hall Calls
- Metal or wood handrail
- Minimal anchoring package, anchors to floor, upper floor joists and ceiling (semi free standing)