

Limited Use/Limited Application Elevator



ABOUT CIBES | SYMMETRY

A PART OF CIBES LIFT GROUP

Our company was founded in 2008, by an entrepreneurial group of people, driven by the vision of elevating life across the US. Today, Symmetry has become a household name for elevators in North America, with high rankings on the Forbes List for Best Home Elevators.

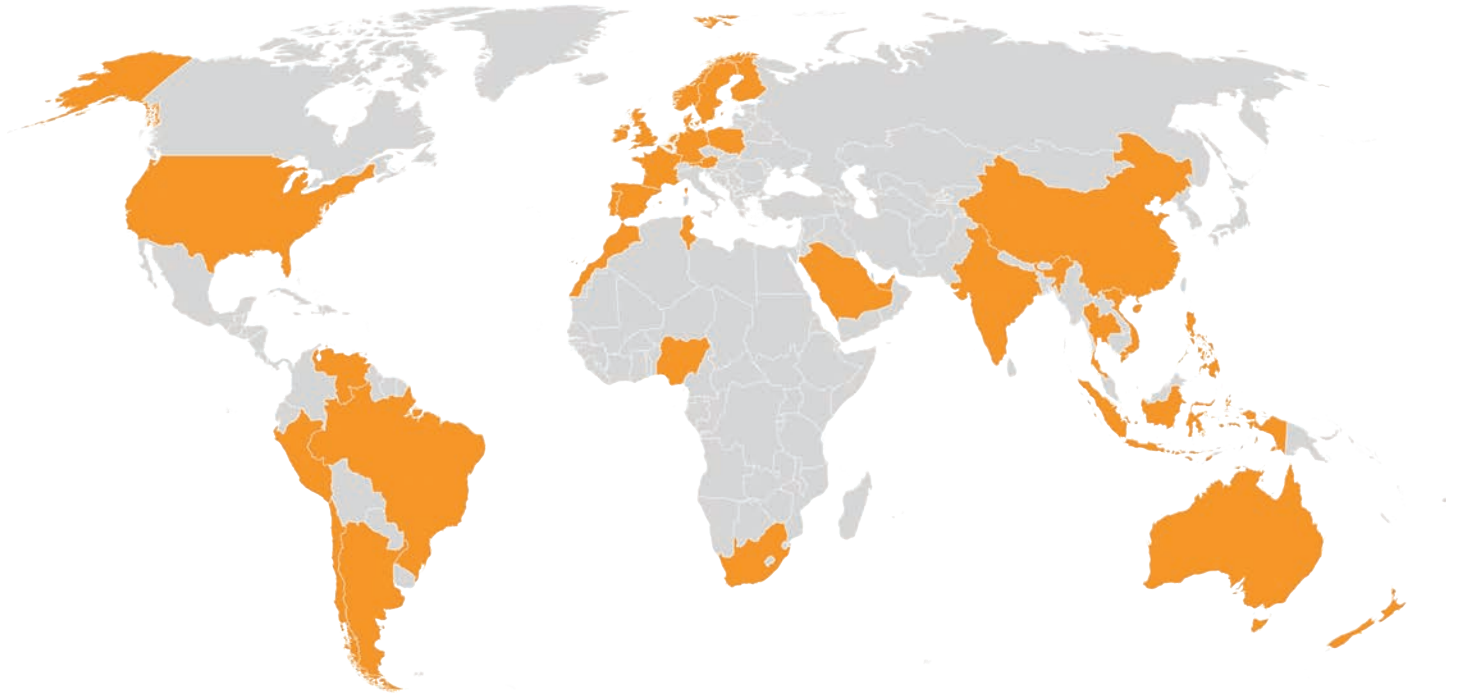
In 2022, we joined forces with global Swedish elevator manufacturer Cibes Lift Group and became Cibes Symmetry. Together, we offer you close to a century of consolidated knowledge, combining Swedish innovation and design with US craftsmanship and expertise. Our wide range of ADA and ASME compliant elevating solutions are manufactured in the US and in Sweden and distributed through our nationwide network of authorized dealers.



We provide beautifully crafted, expertly engineered accessibility related products across America. We market our residential elevators, home and commercial lifts, and low-rise commercial elevators through an exclusive network of carefully chosen Cibes Symmetry Partners.

CIBES LIFT GROUP

A GLOBAL SALES NETWORK



PRESENT IN:

UNITED STATES OF AMERICA | SWEDEN | NORWAY | FINLAND | FRANCE | UNITED KINGDOM | GERMANY | DENMARK | NETHERLANDS | SPAIN | AUSTRIA | BELGIUM | PORTUGAL | POLAND | IRELAND | MALTA | DUBAI | CHINA | VIETNAM | THAILAND | INDONESIA | PHILIPPINES | CAMBODIA | INDIA | SAUDI ARABIA | QATAR | BAHRAIN | EGYPT | SOUTH AFRICA | NIGERIA | MOROCCO | TUNISIA | AUSTRALIA | NEW ZEALAND | COLUMBIA | BRAZIL | PERU | CHILE | ARGENTINA |

WHAT IS A LIMITED USE/LIMITED APPLICATION ELEVATOR?

The Symmetry Elevation LULA elevator is designed to comply with ASME A17.1 Section 5.2 and the Americans with Disabilities Act (ADA). LULA elevators are intended to provide access for low occupancy/low rise commercial buildings where a traditional passenger elevator is not feasible or required by code. Due to the design intent, LULA elevators are limited by speed, travel distance, and capacity.


When only the highest level of safety is your standard, the Elevation LULA elevator is the optimal product for your project. Leading the industry in quality, style and design, Elevation by Symmetry is engineered and designed for limited commercial, as well as residential, use.

The Elevation is ideal for applications up to six stops and up to 50 feet of travel (with travel variance) and is designed for use in schools (and other educational settings), churches, multi-family housing units, libraries and more.



Stainless Steel Car in Ivory

CIBES SYMMETRY ADVANTAGES:

- › Proudly made in the U.S.A. 
- › Lowest overhead required
- › Shallowest pit required
- › Single phase power
- › ADA compliant
- › Machine room less (MRL) available
- › Customizable interior design



Brushed Stainless Steel Car with Custom Laminate Applied Panels

CIBES SYMMETRY ELEVATORS

LIMITED USE/LIMITED APPLICATION

This brochure is intended for INFORMATIONAL PURPOSES ONLY and SHOULD NOT be used for construction.

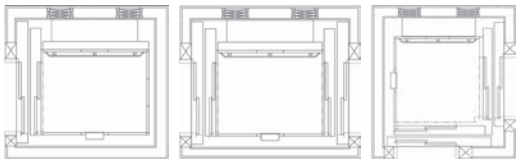
STANDARD FEATURES

- › Code Compliance: Designed to comply with ASME A17.1 Section 5.2 and includes ETL, UL or CSA certified components
- › Rated Capacity: 1,400 lbs. (635 kg)
- › Lifting Height: Up to 25' 0" standard
- › Power Supply: 208/230 VAC, 1 PH, 30 amp, 60 Hz
- › 3 PH motor and controller also available
- › Interior Car Height: 7' 0"
- › Speed: 30 fpm; also available as 40 fpm with variance
- › Automatic self-leveling
- › Drive System: 2:1 roped hydraulic
- › 4 LED lights with black trim rings
- › Two stops
- › Doors: 3'0" x 6'8" automatic horizontally sliding, two speed hoistway and car door; full-height light curtain
- › Pit Depth: 13" standard, 14" if buffer springs required
- › Selective Collective Programmable Logic Controller (PLC)
- › Overhead: New construction 132", existing construction as low as 104"
- › Car-mounted directional indicator with audible signals
- › 4 HP submersible pump and motor for quiet operation
- › Two-speed control valve
- › Low oil protection
- › Homing timer
- › Digital position indicator
- › Warranty: 3-year limited parts, extended parts warranty available



Stainless Steel car with custom applied panels and Black painted car doors

Clear Platform Size	Enter/Exit Same Side	Straight-Through	90° Adjacent
48"W x 54"D	✓	✓	
42"W x 54"D	✓	✓	
42"W x 60"D	✓	✓	
51"W x 51"D			✓



CIBES SYMMETRY ELEVATORS

OTHER FEATURES

SAFETY FEATURES

- › ADA hands-free phone
- › Keyed in-car stop switch and alarm button
- › Emergency lighting in car interior
- › Uninterruptible Power Supply (UPS) for car lowering and operating of the car and hoistway doors in the event of a power failure
- › Broken/slack suspension safeties
- › Overspeed valve
- › Tactile/braille characters
- › Emergency manual lowering

OPTIONAL FEATURES

- › Machine room less (MRL)
- › Up to six stops
- › Steel or wood car prepped for glass (glass by others)
- › Landing position indicators
- › Keyed hoistway access
- › Phase 1 and Phase 2 fire service
- › Phone line monitoring system
- › LED lights with Nickel, Bronze or White trim rings
- › Ventilation system
- › Keyed controls
- › Service indicator
- › Buffer springs
- › 3 HP motor and controller
- › Laminate applied car panels



Custom laminated safety glass landing and car doors, optional position indicator, concurrent landings



Brushed Stainless Steel landing door

CIBES SYMMETRY ELEVATORS

FIXTURES

To see more custom elevator options please reach out to our local Cibes Symmetry representative



Standard Brushed Stainless Steel
COP with Position Indicator



Car
Directional
Indicator



Standard
Brushed
Stainless
Steel Hall Call



LULA Elevator with
Landing Position
Indicator (optional)



Standard Brushed Stainless Steel
handrail with turnbacks



LED Lights with trim ring
(Black standard)

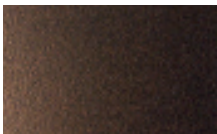
FINISHES



Brushed Stainless
Steel (standard)



Black



Vintage Bronze

OPTIONAL FEATURES - Required by ASME A17.1-2019 and later

Audio-Visual Two-Way Communication System

3D Light Ray Kit



Audio-Visual
Camera



Audio-Visual Yes or
No Buttons



COP with Audio-
Visual Package
Installed



Audio-Visual
Display Screen



Audio-Visual
Blinking LED
Light



3D Light Ray Kit
corner mounted
for side-opening
doors



Close up of 3D Light Ray
Kit installed

CUSTOMIZATIONS

CAR PANEL AND DOOR OPTIONS

INTERIOR CAR PANEL



Flat Panel



Shaker Panel



Recessed Panel



Raised Panel



Steel Panel

WOOD SPECIES



Red Oak
(standard)



Birch



Maple



Alder



Cherry



Hickory

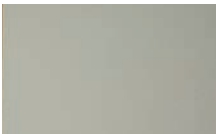


Walnut

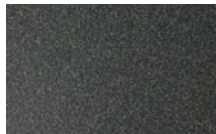


White Oak

LAMINATE PANELS



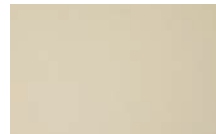
Dove Grey



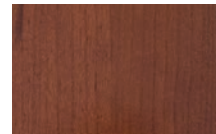
Graphite
Nebula



Loft Oak



Alabaster

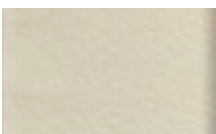


Williamsburg
Cherry



Astro Strandz

CAR/DOOR FINISHES



Ivory
(standard)



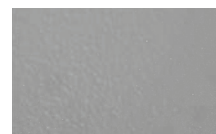
Brushed
Stainless Steel



Black



Architectural
White



Grey



RAL

Colors illustrated may vary due to print or digital technology

cibessymmetry.com | 877-375-1428



Cibes | symmetry

Cibes Symmetry is a beautifully crafted, expertly engineered accessibility-related product line proudly made in the U.S.A. at Bella Elevator, LLC since 2008. Promoted and sold by our exclusive nationwide network of carefully selected Symmetry partners and associates, Symmetry offers residential elevators, vertical platform lifts (VPL), limited use/limited application (LULA) elevators and vertical reciprocating conveyors (VRC).