

Commercial Vertical Platform Lift

VPL-CL



VPL-ELP



VPL-ELP



VPL-EL

For VPL Models:

VPL-UL (Unenclosed Lift)

VPL-EL (Enclosure Lift)

VPL-ELP (Plexiglass Enclosure Lift)

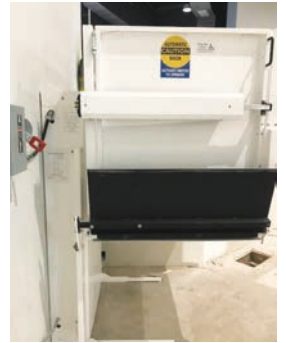
VPL-SL (Shaftway Lift)

VPL-Hybrid (Hybrid Lift)



Proudly Made in the U.S.A.

Unenclosed Lift



Enclosure Lift Plexiglass Enclosure Lift



Shaftway Lift



Hybrid Lift



Convenient access to all levels

For commercial outdoor or indoor use, Symmetry Vertical Platform Lifts (VPLs) help eliminate the barrier that stairs may present for people with limited mobility. VPLs provide convenient access without compromising architectural character. Designed and manufactured to comply with the applicable requirements in ICC A117.1, ASME A18.1 and NFPA 70.

Standard Features

- Rated Capacity: 750 lbs.
- Lifting Height: Up to 168" (not available on VPL-UL) (Hydraulic units may exceed 168" with variance)
- Speed: 10-20 fpm (see drive options for details)
- Steel construction with powder-coated finish
- A.W.A.R.E. system (Active Wiring, Accessories, Relay and Electronics Diagnosis)*
- Hold-to-run up/down control switch installed on the platform
- Hold-to-run control station provided at each landing
- Manual lowering device
- Warranty: Three-year limited parts

Safety Features

- Grab rail
- Non-skid platform surface (Black)
- Obstruction safety panel under platform (when not installed within a runway enclosure)
- Alarm and emergency stop switch
- Landing interlocks keep doors closed/locked when the platform is at another landing
- Upper final limit switch (optional on Hydraulic Drive)
- Safety lift nut for Acme Screw Drive
- Broken chain safeties for Hydraulic Drive

Optional Features

- Low Profile Carriage: 1½" pit depth (not available on VPL-UL)
- Remote mounted controller
- 230 VAC power supply
- ADA phone for both indoor or outdoor applications
- Emergency platform lighting
- 5 ftc LED lights with or without battery backup
- Full-speed battery backup
- Power gate/door operators
- Flip-up ramp (VPL-UL only)
- Single or double slope roof (VPL-EL and VPL-ELP only)
- Extreme weather package

Clear Platform Sizes

Custom sizes and designs available

- 36"W x 54"L standard
- 36"W x 48"L
- 36"W x 60"L
- 42"W x 60"L

Gate/Door Options

- 42" platform gate (not available for VPL-SL)**
- 42" landing gate**
- 80" landing gate**
- Non-Fire-rated Red Oak door†
- 1½ hour Fire-rated steel door (B Label)

* Symmetry Elevating Solutions exclusive

** Available with optional acrylic insert

† Also available in other wood choices by request

Colors illustrated may vary due to print or digital technology

Enter/Exit Configurations

- Straight-Through
- 90°
- 3 Openings
- Same Side (not available on VPL-UL)

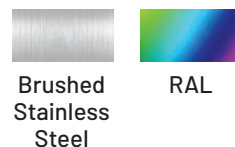
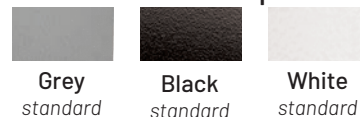
Drive Options

- Acme Screw Drive: 10 fpm, 1.5 HP, 115 VAC
- Accelerated Acme Screw Drive: 20 fpm, 1.5 HP, 115 VAC
- Chain Hydraulic Drive: 17-20 fpm, 3 HP, 115 VAC

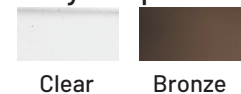


VPL-ELP

Enclosure Color Options



Acrylic Options



This brochure is intended for INFORMATIONAL PURPOSES ONLY and SHOULD NOT be used for construction. Not all options available on all models. Please see VPL or Hybrid design guide for model specific details.