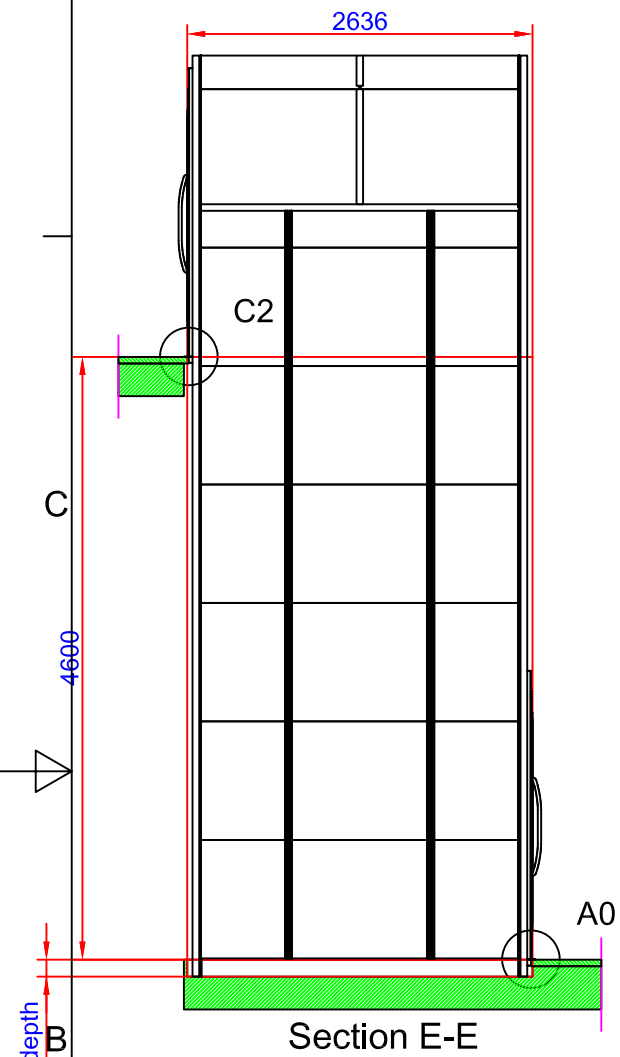
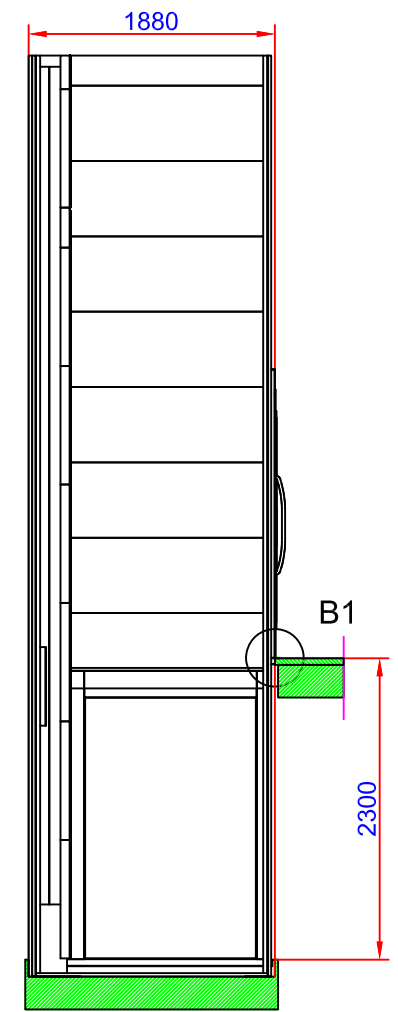


Shaft cutout sizes

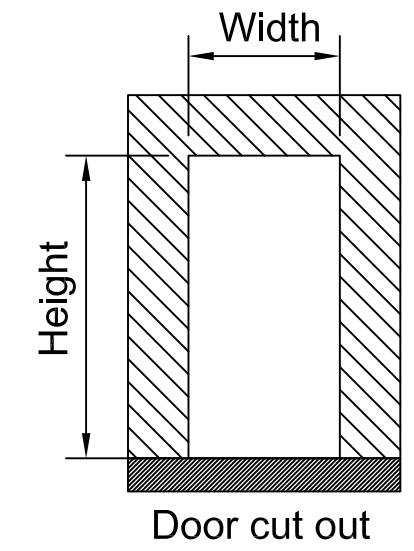
Door front cutout sizes		
Landing	Width	Height
A 0	1855	2250
B 1	2580	2250
C 2	1855	2250



Section E-E



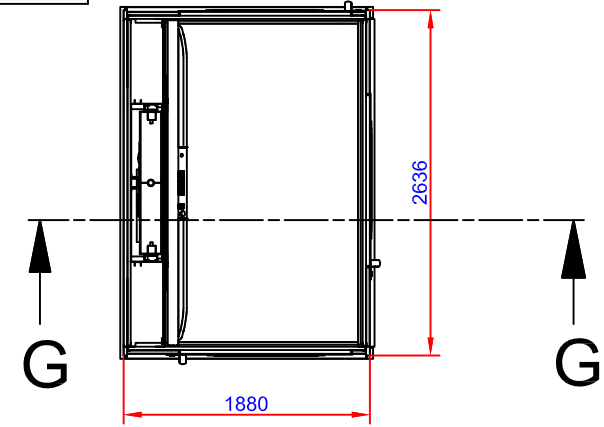
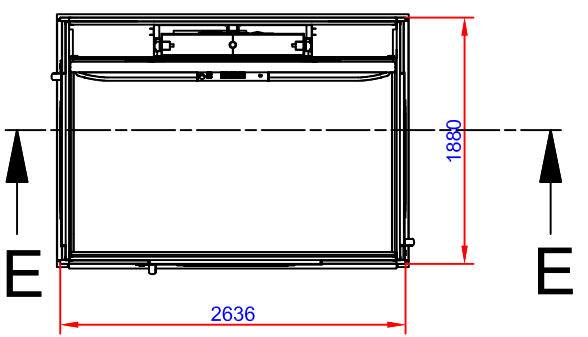
Section G-G



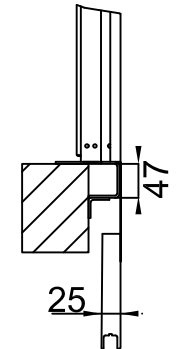
Door cut out

130 mm pit depth

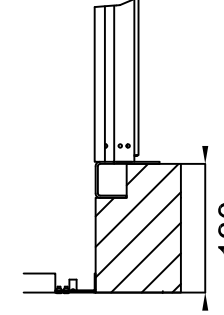
130 mm pit depth. Bottom surface must be flat + 10 mm



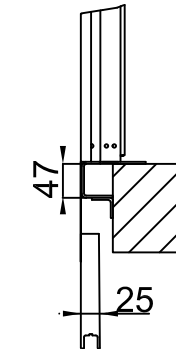
C2 (1:10)



A0 (1:10)



B1 (1:10)



Approved by builder:

European view placement:



Tender no	Principal drawing		
Order no	A8000 - 1405*2480		
Gen. Tolerances	Date	sheet	Scale:
SS-ISO 27681-1 m	2018-11-01	2 of 7	A3, 1:1

Loads sustained by shaft and platform
and fixing points bottom frame

Recommended positioning of fixing points.
Loads per fixing point, $F = 4 \text{ kN}$

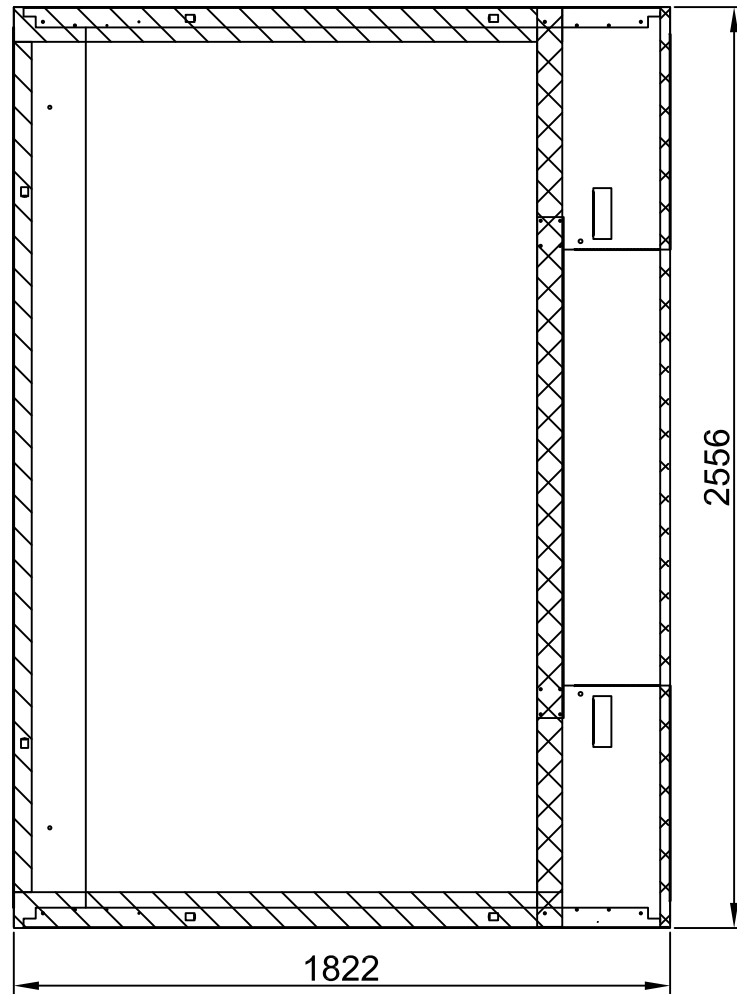
A (1:5)



L section force: 3,48 kN
L section load: 11,41 kN/m²

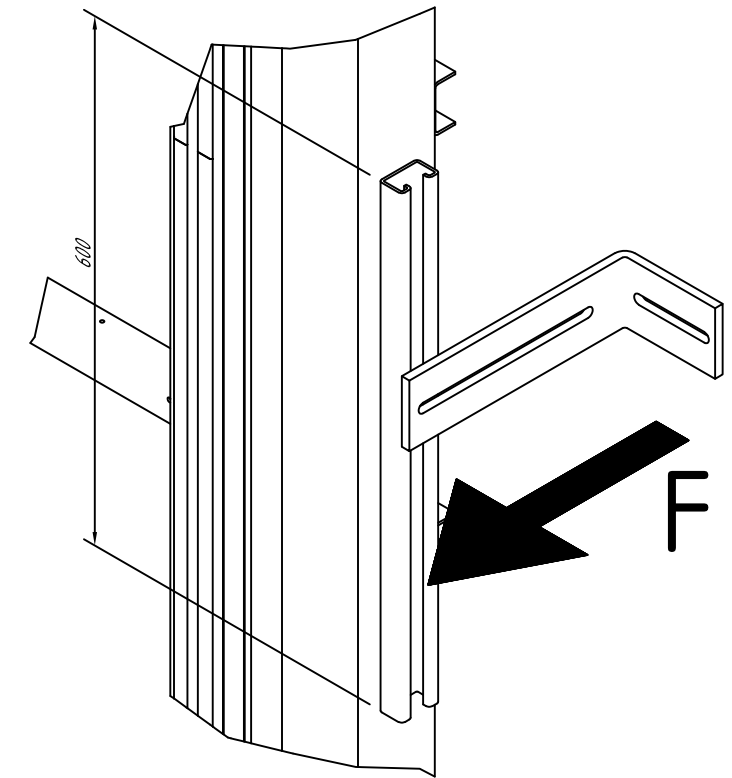
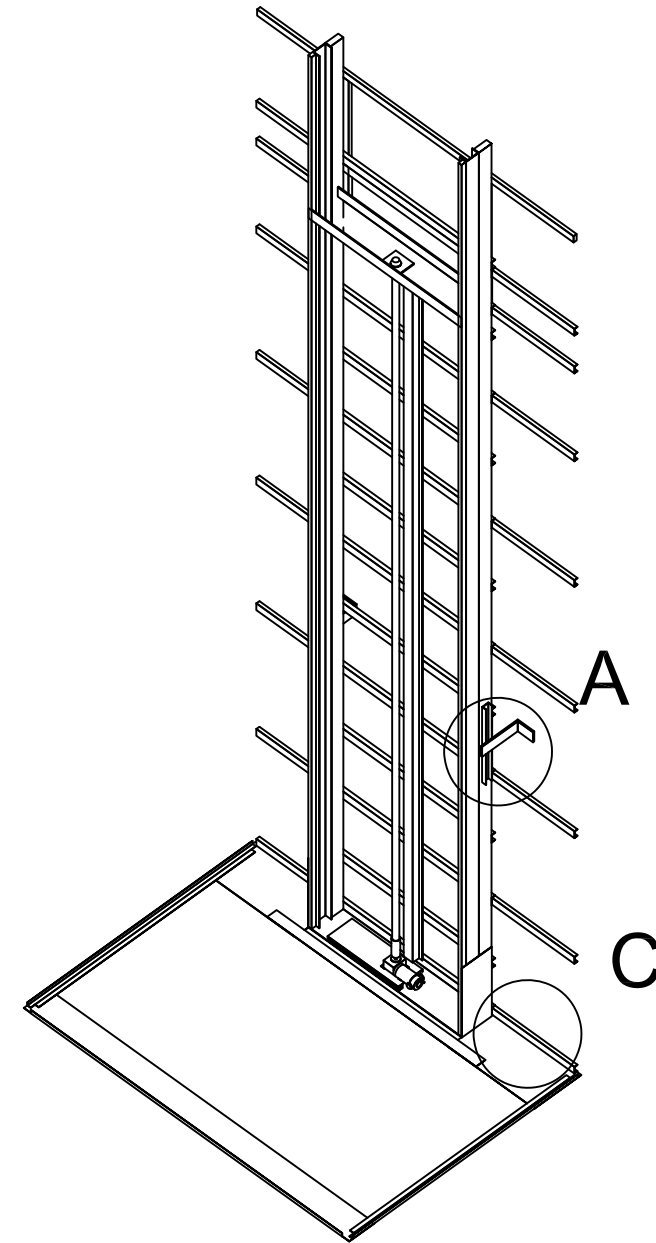
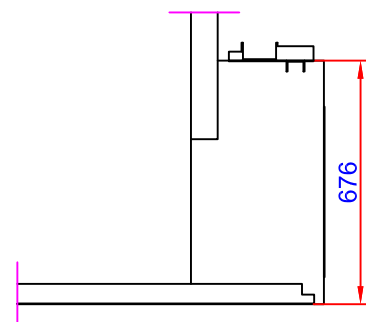




Mast force: 15,85 kN
Mast load: 127,82 kN/m²



Scale: 1:20

C (1:20)



Approved by builder: _____			Tender no	Principal drawing A8000 - 1405*2480 Loads and forces		
			Order no			
European view placement: 	Gen. Tolerances SS-ISO 27681-1 m	Date 2018-11-01	sheet 3 of 7	Scale: A3, 1:1		