

# HDN



HDN – USPs

General Technical Info

Safety

Versions

Flooring

Call Stations

Onboard Column

3D drawings

Installation dimension



# HDN USP's



**HDN:** The latest product in the Liftup product portfolio. Perfect lift solution for installation in for example store entrances and hotel lobbies.

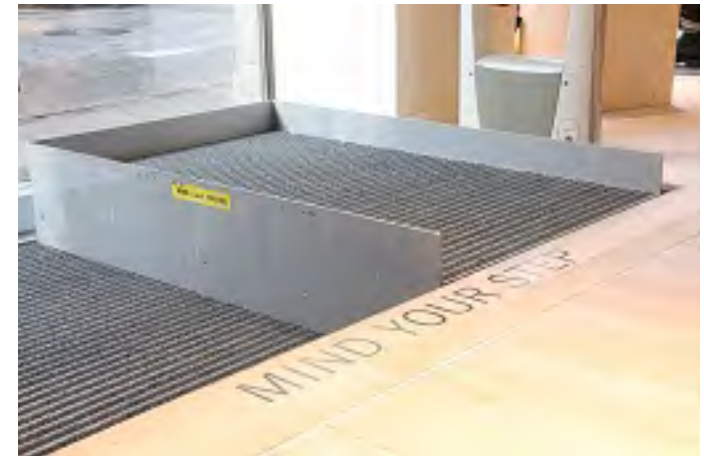
**Integrable design:** Surface material can be integrated according to surroundings

**Lifting capacity:** The HDN can take a load of up to 400kgs. which places it in the top range within this product category.

Completely closed and **injury-risk-free** system.

**Simple and safe** operating concept requires no assistance from staff.

Extremely **silent** during operation makes the HDN suitable in any environment.



# General Technical Info



**Platform size:** 1400 x 900/1000/1100 mm

**Pit depth:** 350 mm

**Lifting height:** 50 – 500 mm

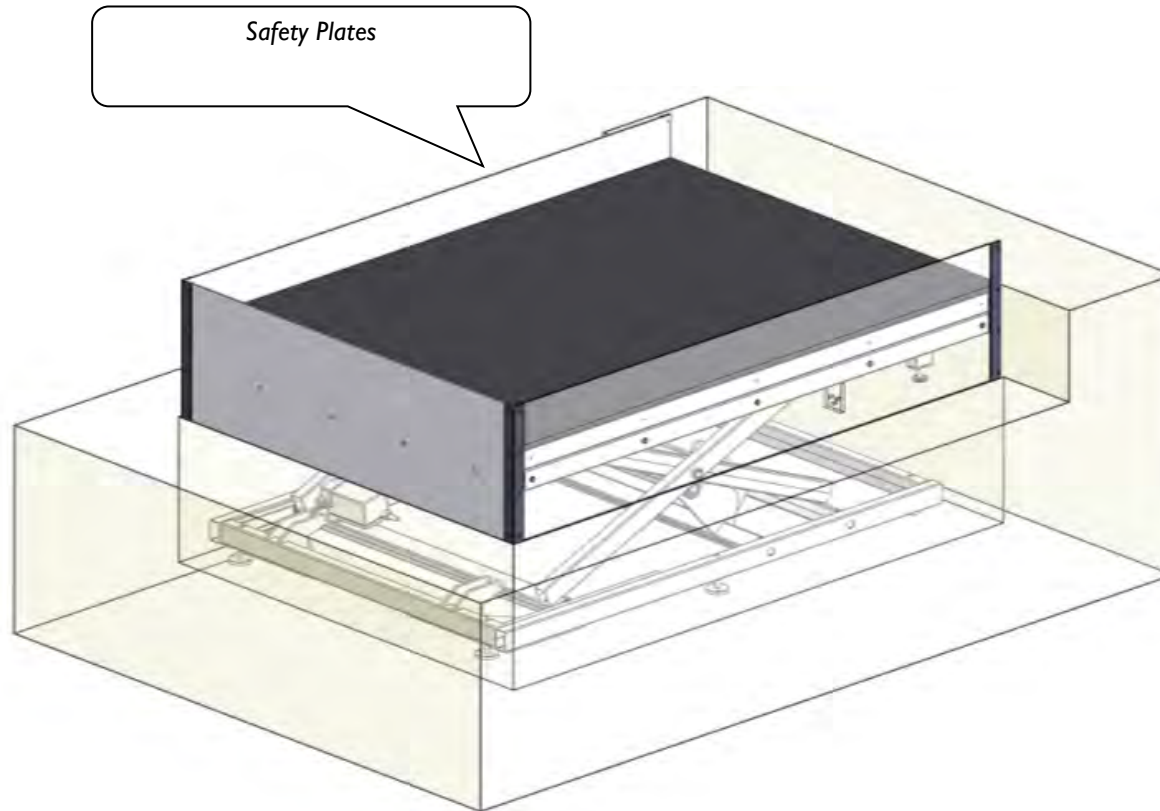
**Lifting capacity:** 400 kg

**Lifting speed:** 25mm/sec.

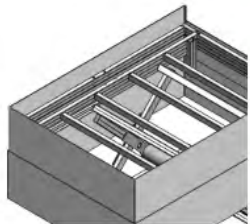
**Electrical:** 230 VAC – 10A



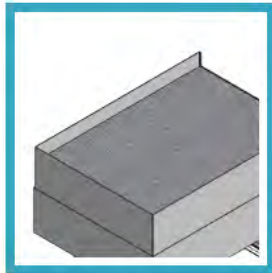
# Safety



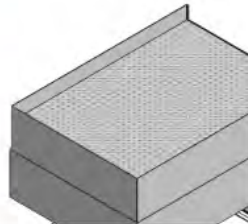
# HDN - Flooring



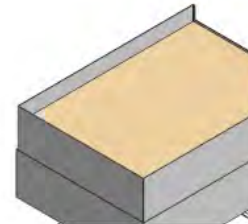
No flooring



Non-skid  
Linoleum



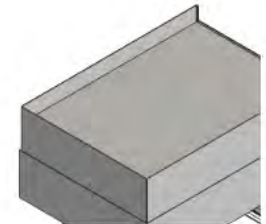
Aluminum  
checker plate



Baseplate,  
plywood

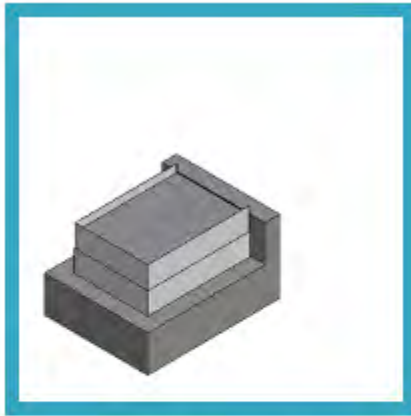


Carpet with  
Symbol

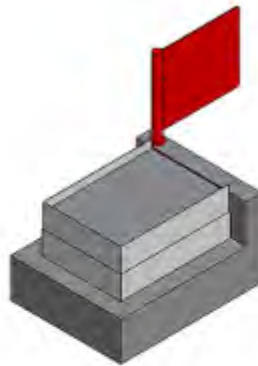


Baseplate,  
aluminium 5mm  
(Prepared for  
Tiles)

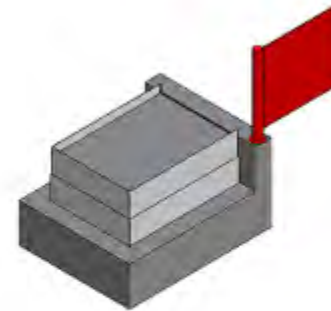
# HDN Safety options (only on short side exit)



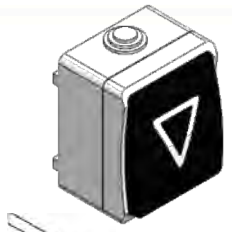
No safety option



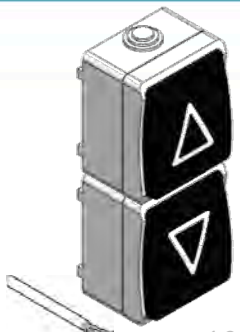
Door left hand  
side



Door right hand  
side



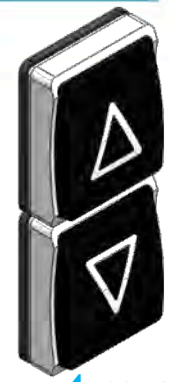
1 107069



2 107070



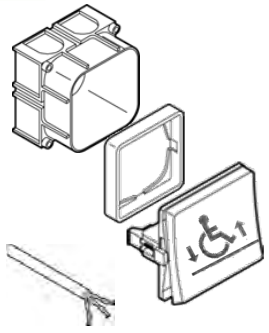
3 107071  
107073



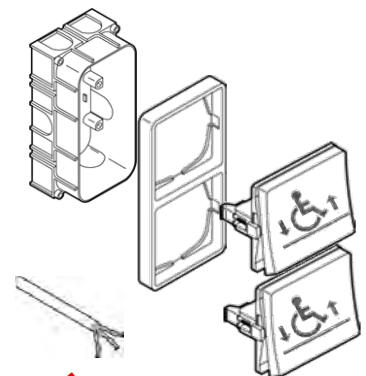
4 107072



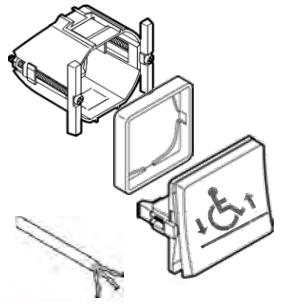
Standard	Push Buttons	(1)		
	Push Buttons	(2)		
	Push Buttons	(3)		
	Wireless*	(4)		
FUGA*	Flush Mounted for stone walls	(5)	■	■
		(6)	■	■
	Flush Mounted for stud walls	(7)		
		(8)		
FUGA*	wall mounted in box	(9)	■	■
		(10)	■	■
		(11)		
Key switch - Call station		(11)		
Key switch - Call station		(11)		
No call Stations / Cables Only - 6m				



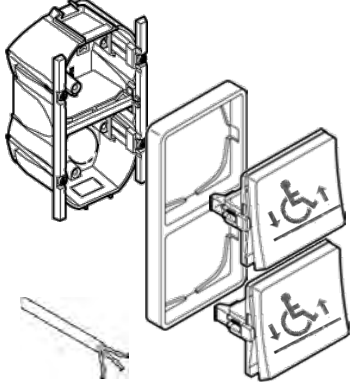
5 101762



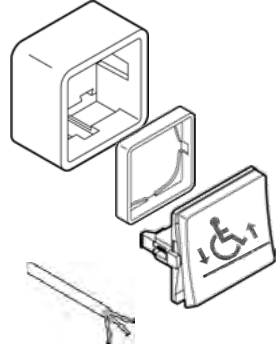
6 101808



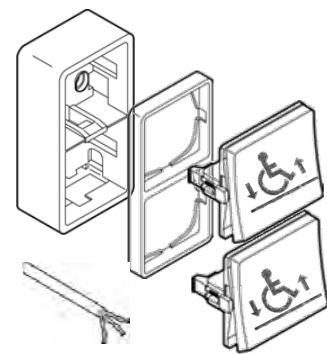
7 101763



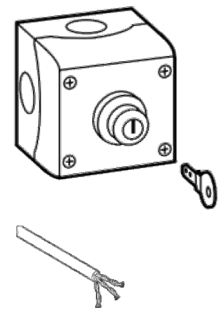
8 101810



9 101761



10 101811



11 101620

# Call Stations



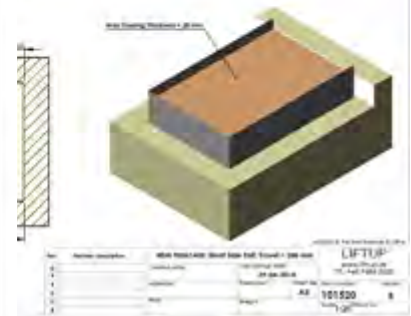
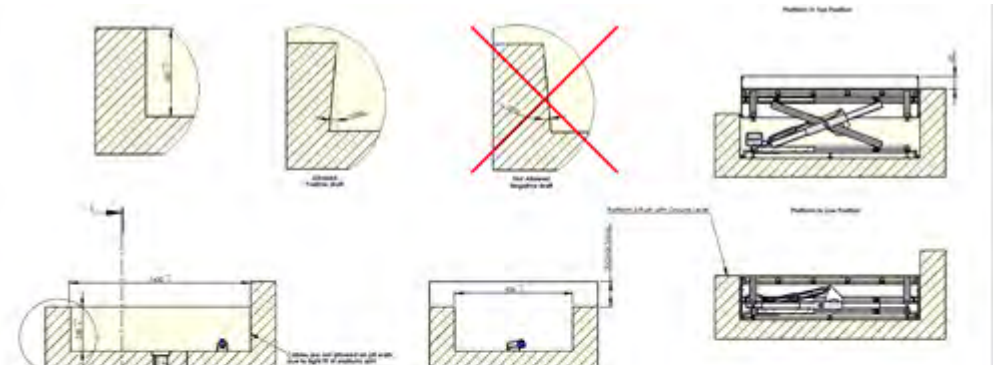
The HDN-Lift is operated using the two operating panels respectively above and below the platform, a button panel sited by the platform or by using the remote control.

No onboard operation panel.

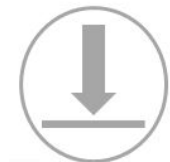
- A stand-alone column for call stations.



# 3D drawings



	Basis model (< 200 mm venstre)		Tilvalg - højt løft (201-500 mm venstre)	
	Udkørsel på kort side	Udkørsel på lang side	Udkørsel på kort side	Udkørsel på lang side
900 x 1400 mm	<a href="#">Download (PDF/DXF)</a>	<a href="#">Download (PDF/DXF)</a>	<a href="#">Download (PDF/DXF)</a>	<a href="#">Download (PDF/DXF)</a>
1000 x 1400 mm	<a href="#">Download (PDF/DXF)</a>	<a href="#">Download (PDF/DXF)</a>	<a href="#">Download (PDF/DXF)</a>	<a href="#">Download (PDF/DXF)</a>
1100 x 1400 mm	<a href="#">Download (PDF/DXF)</a>	<a href="#">Download (PDF/DXF)</a>	<a href="#">Download (PDF/DXF)</a>	<a href="#">Download (PDF/DXF)</a>



# Installation Dimensions

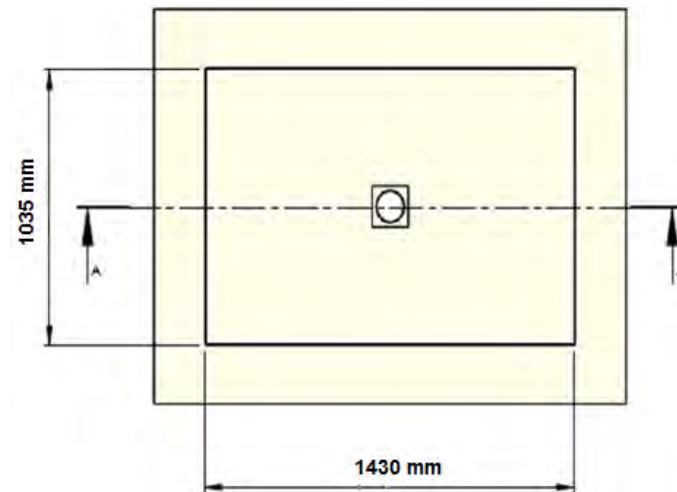
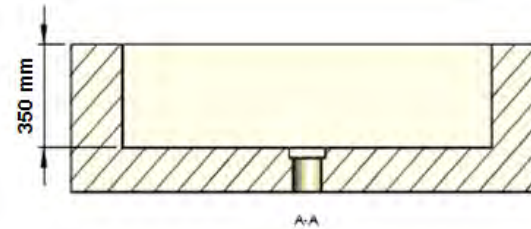


Look at the questionnaire !

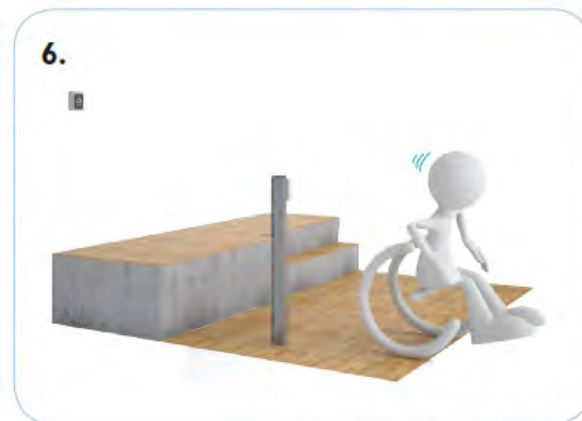
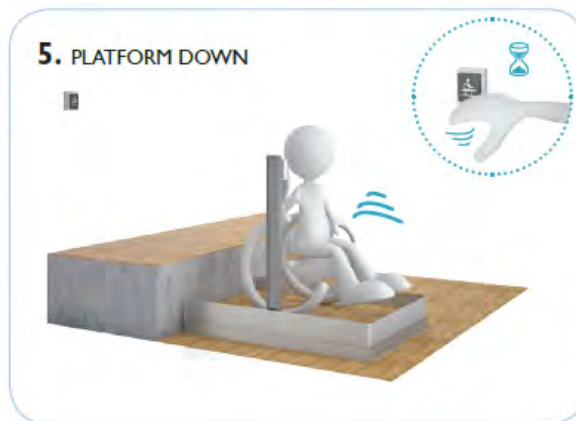
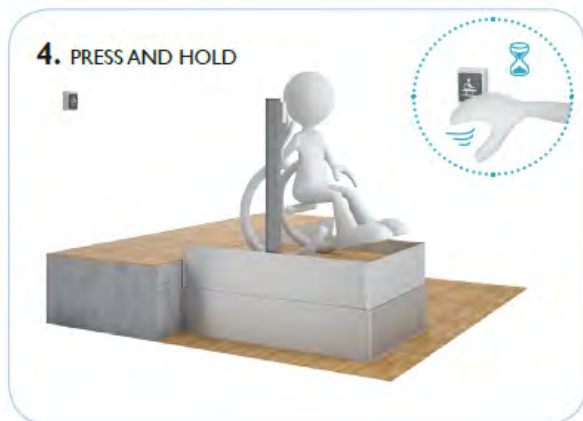
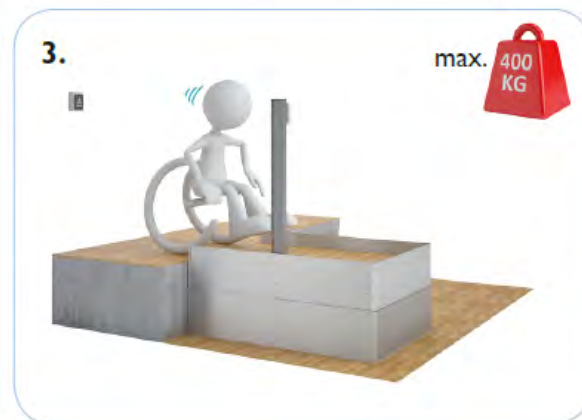
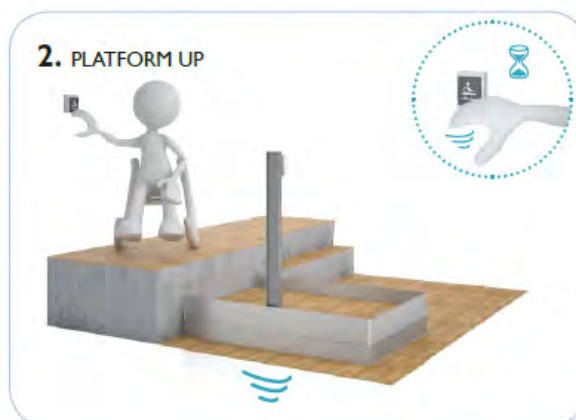
Pit 350 mm.

Long side 1430 mm

Short side = Width + 35 mm



## USING THE HDN



UPPER LANDING

# Plug & Use

